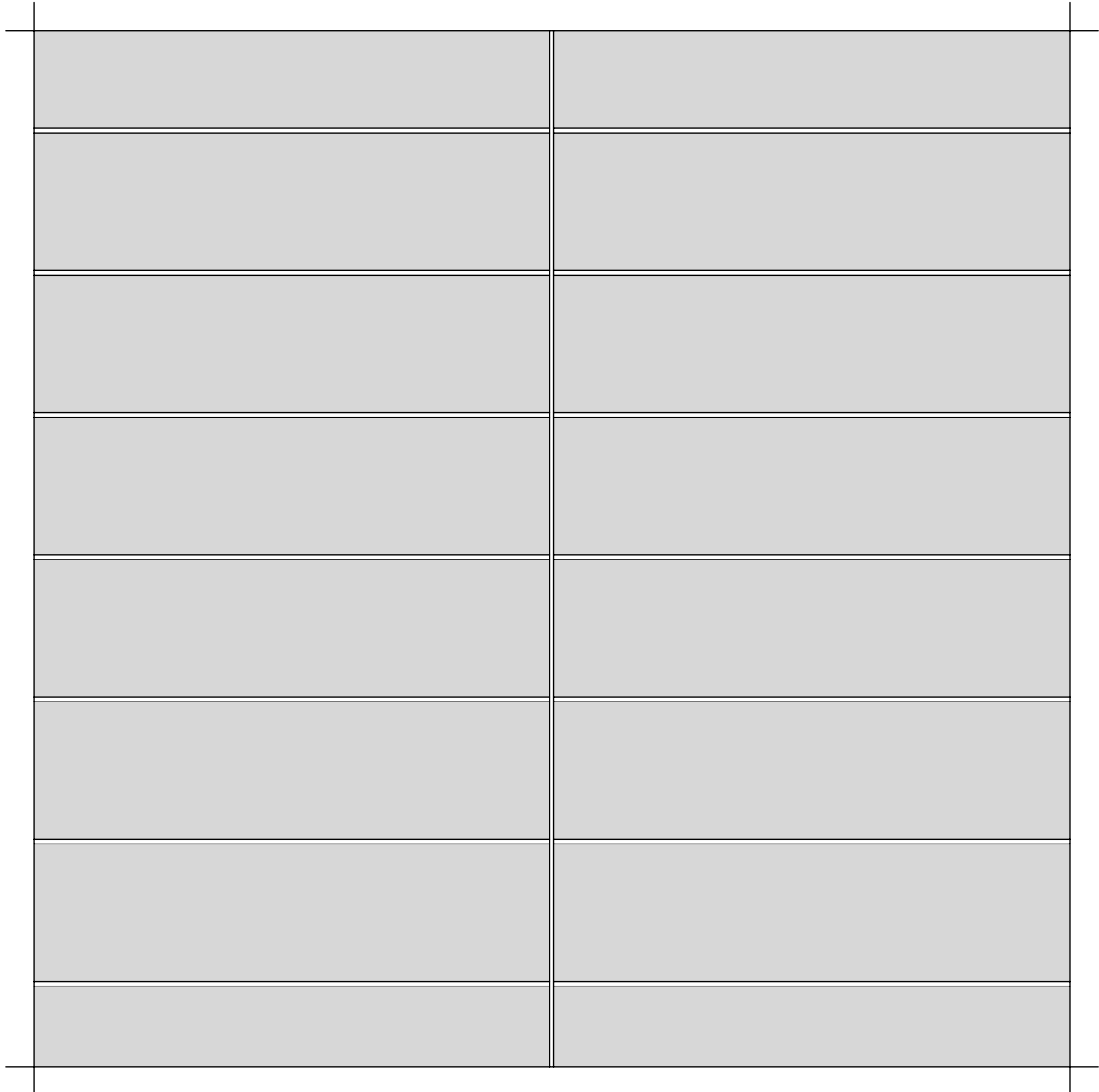


# KeraTwin®K20

OMEGAPROFIL AUF HORIZONTALLEM HUTPROFIL  
OMEGA SYSTEM RAIL ON HORIZONTAL HAT PROFILE  
RAIL SYSTEME OMEGA SUR PROFILE CHAPE HORIZONTAL



WEITERE OBJEKTSPEZIFISCHE DETAILS AUF ANFRAGE  
FURTHER PROJECT-RELATED DETAILS UPON REQUEST  
D'AUTRES DETAILS RELATIFS AU PROJET SUR DEMANDE

Alle Rechte vorbehalten. Außervertragliche Nutzung nur mit unserer schriftlichen Genehmigung.  
All rights reserved. Noncontract use is subject to our previous written consent.  
Tous droits réservés. Utilisation hors contract seulement avec notre autorisation écrite.

**DEUTSCHE STEINZEUG**  **AGROB BUCHTAL** AGROB BUCHTAL GmbH Architektenservice D - 92521 Schwarzenfeld  
Tel. 09435 / 391 3238 e-mail: [as.fassade@deutsche-steinzeug.de](mailto:as.fassade@deutsche-steinzeug.de)

STAND: September 2020

DIES SIND UNVERBINDLICHE KONSTRUKTIONSVORSCHLÄGE, DIE FÜR JEDES PROJEKT AUF ANWENDBARKEIT UND RICHTIGKEIT GEPRÜFT WERDEN MÜSSEN.  
THESE ARE NOT BINDING CONSTRUCTION PROPOSALS WHICH HAVE TO BE VERIFIED FOR EACH INDIVIDUAL PROJECT AS REGARDS APPLICABILITY AND CORRECTNESS.  
IL S' AGIT DE PROPOSITIONS DE CONSTRUCTION SANS ENGAGEMENT DE NOTRE PART QUI DOIVENT ETRE VERIFIEES POUR CHAQUE PROJET A LEUR EXACTITUDE ET FAISABILITE.

# SYSTEMÜBERSICHT

SYSTEM SCHEME

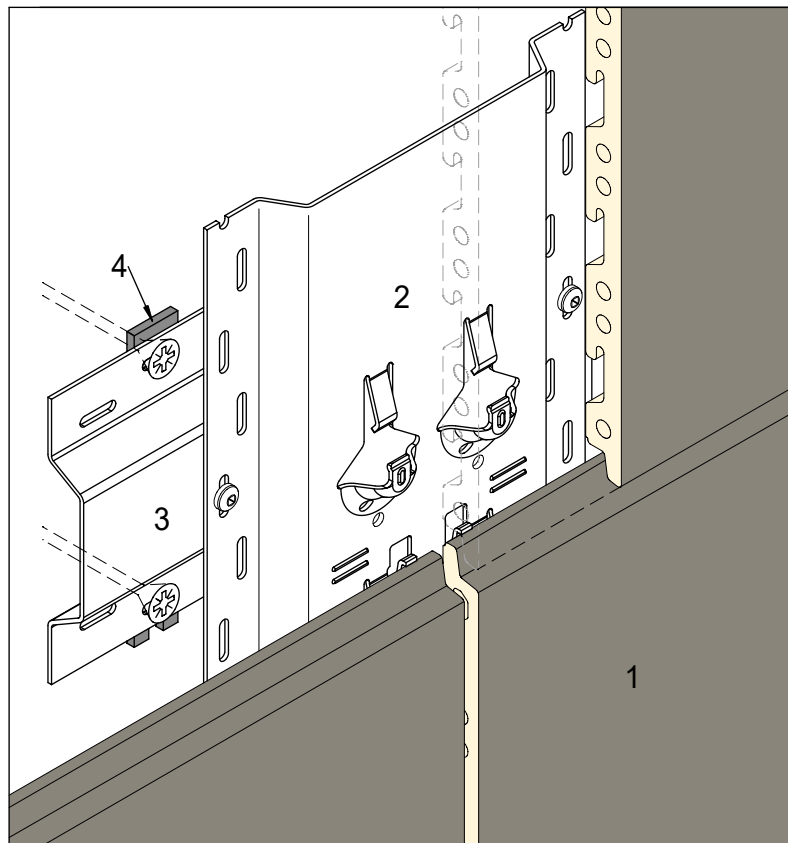
SYSTEME - VUE D' ENSEMBLE

## KeraTwin® K20

OMEGAPROFIL AUF HORIZONTAL HUTPROFIL

OMEGA SYSTEM RAIL ON HORIZONTAL HAT PROFILE

RAIL SYSTEME OMEGA SUR PROFILE CHAPE HORIZONTAL



- 1 - KeraTwin® K20 - FASSADENPLATTE
- 2 - VERTIKALES OMEGAPROFIL Art.-Nr.: 624-XXX / 627-XXX
- 3 - HUTPROFIL Art.-Nr.: 628HPS - Rm  $\geq$  245 MPa
- 4 - DISTANZSCHEIBE

- 1 - KeraTwin® K20 - PANEL
- 2 - VERTICAL OMEGA SYSTEM RAIL Art.-Nr.: 624-XXX / 627-XXX
- 3 - HAT PROFIL Art.-Nr.: 628HPS - Rm  $\geq$  245 MPa
- 4 - DISTANCE DISC

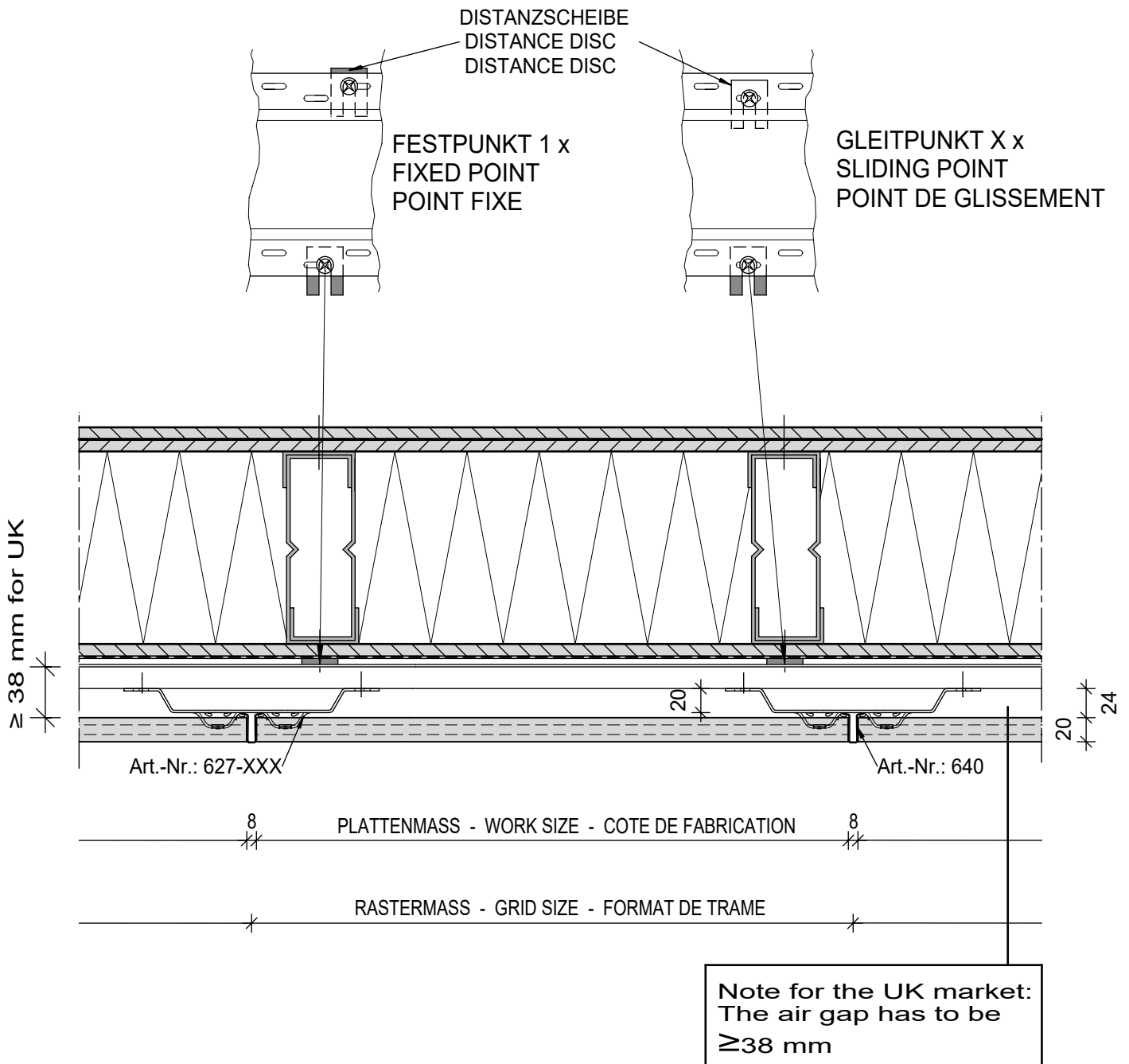
- 1 - DALLE KeraTwin® K20
- 2 - RAIL SYSTEME OMEGA VERTICAL Art.-Nr.: 624-XXX / 627-XXX
- 3 - PROFILE CHAPE Art.-Nr.: 628HPS - Rm  $\geq$  245 MPa
- 4 - DISTANCE DISC

# SYSTEMSCHNITT HORIZONTAL

HORIZONTAL SECTION  
COUPE HORIZONTALE

KeraTwin® K20

OMEGAPROFIL AUF HORIZONTALLEM HUTPROFIL  
OMEGA SYSTEM RAIL ON HORIZONTAL HAT PROFILE  
RAIL SYSTEME OMEGA SUR PROFILE CHAPE HORIZONTAL

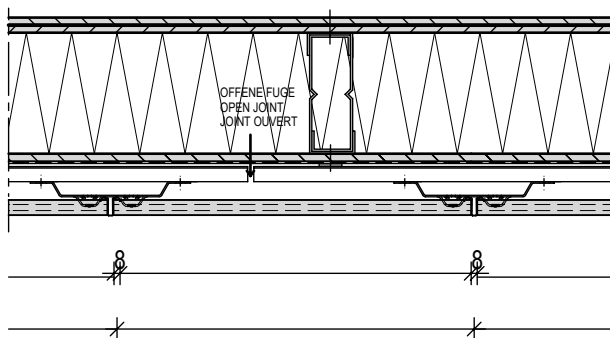
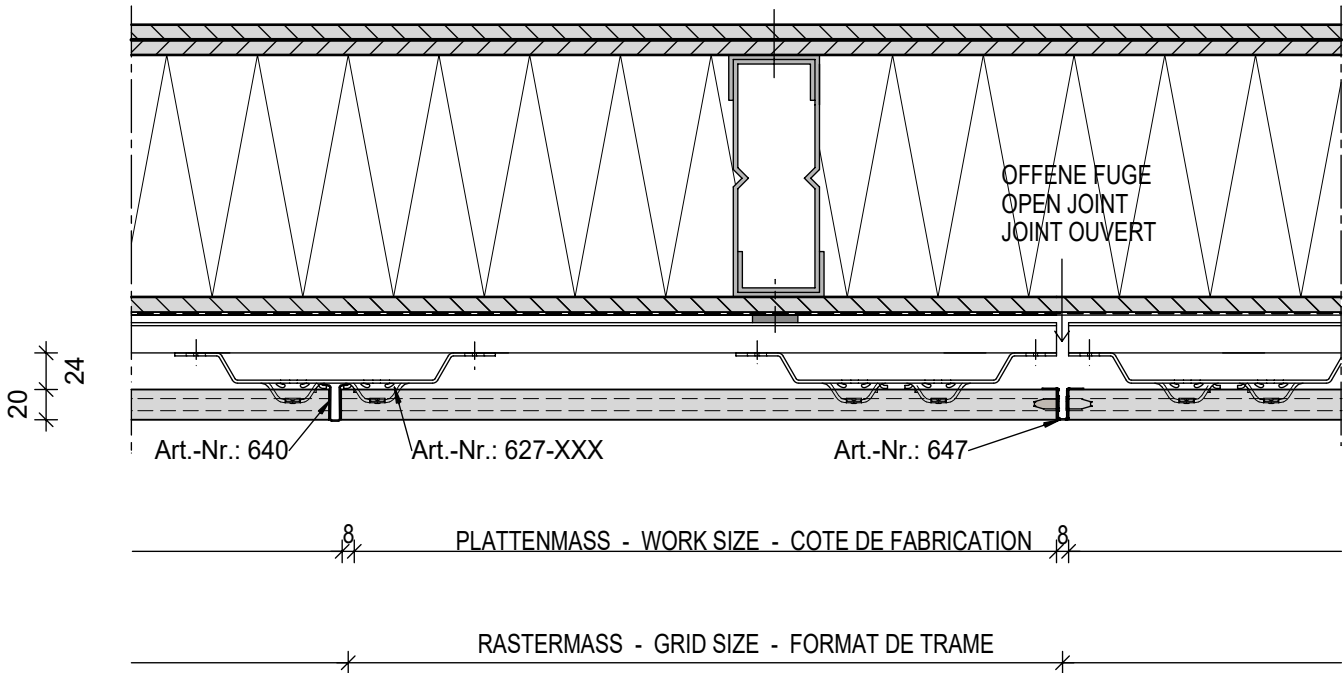


# PROFILSTOSS HORIZONTAL

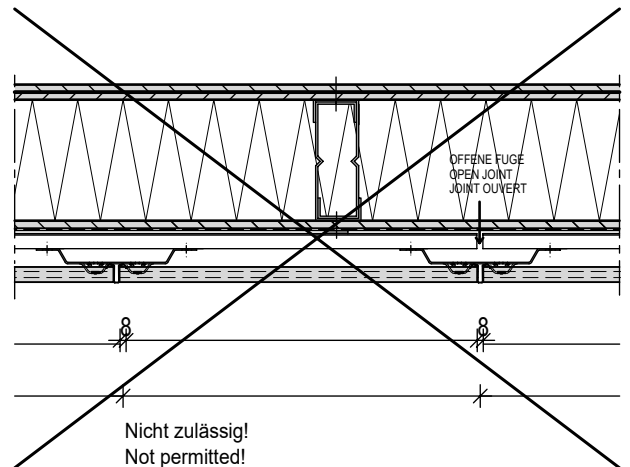
HORIZONTAL BUTT-JOINT OF PROFILES  
BOUT DE PROFILE HORIZONTAL

KeraTwin® K20

OMEGAPROFIL AUF HORIZONTALER HUTPROFIL  
OMEGA SYSTEM RAIL ON HORIZONTAL HAT PROFILE  
RAIL SYSTEME OMEGA SUR PROFILE CHAPE HORIZONTAL



Alternativ  
Alternative  
Alternatif



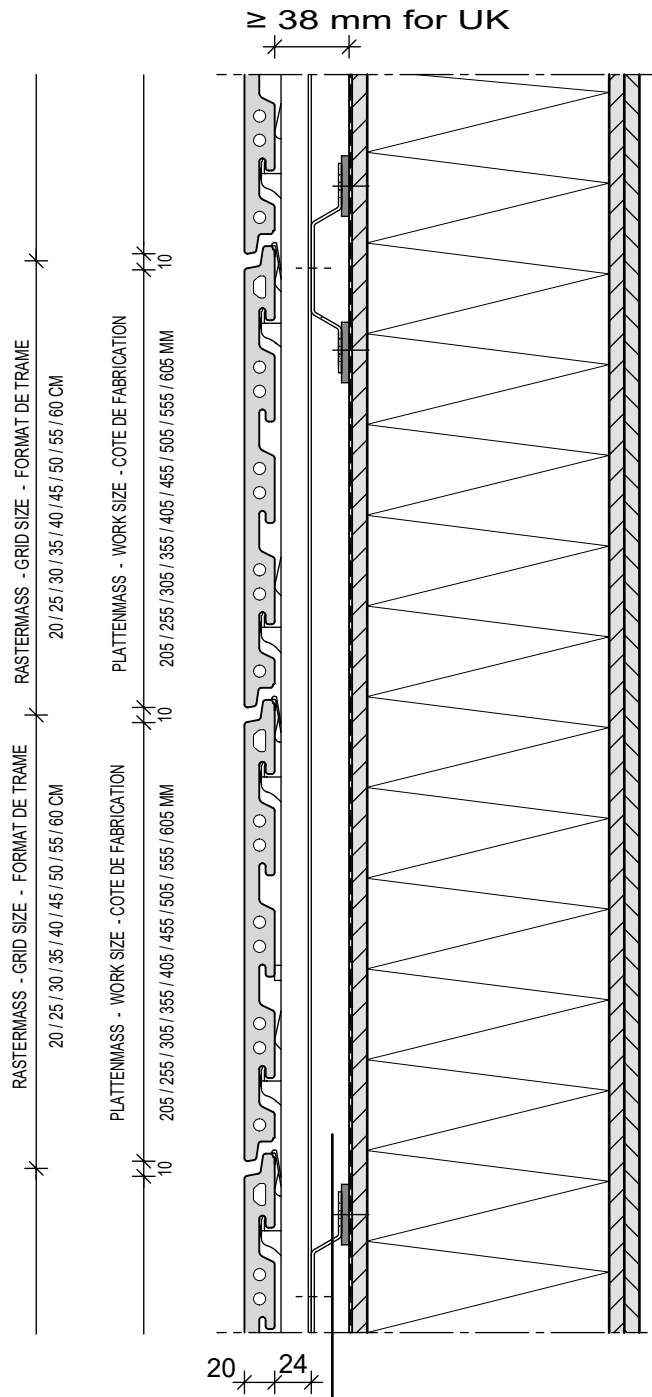
Nicht zulässig!  
Not permitted!  
Non admissible!

# SYSTEMSCHNITT VERTIKAL

VERTICAL SECTION  
COUPE VERTICALE

KeraTwin® K20

OMEGAPROFIL AUF HORIZONTALEM HUTPROFIL  
OMEGA SYSTEM RAIL ON HORIZONTAL HAT PROFILE  
RAIL SYSTEME OMEGA SUR PROFILE CHAPE HORIZONTAL



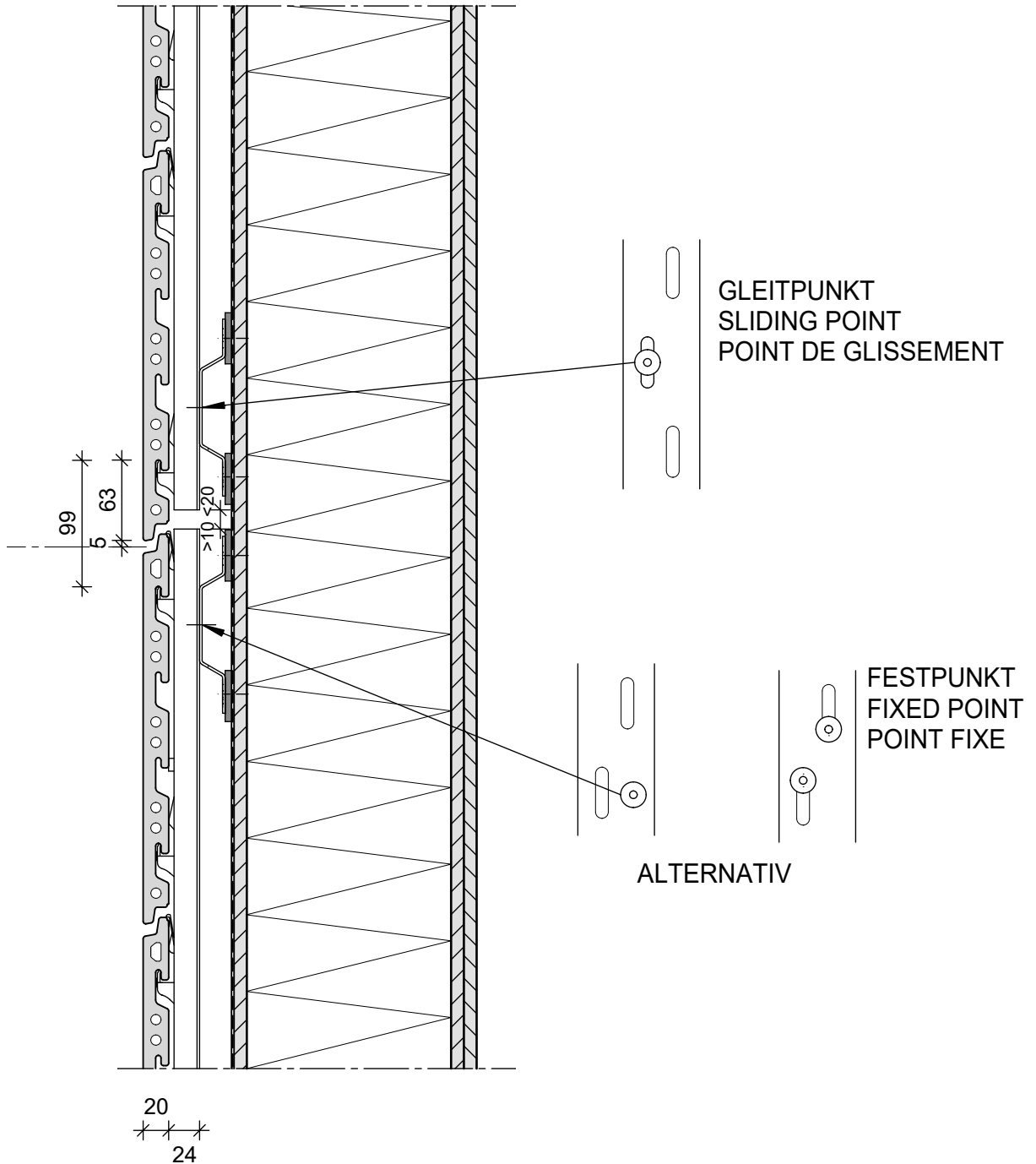
Note for the UK market:  
The air gap has to be  
 $\geq 38$  mm

# PROFILSTOSS VERTIKAL

VERTICAL BUTT-JOINT OF PROFILES  
BOUT DE PROFILE VERTICAL

KeraTwin® K20

OMEGAPROFIL AUF HORIZONTALER HUTPROFIL  
OMEGA SYSTEM RAIL ON HORIZONTAL HAT PROFILE  
RAIL SYSTEME OMEGA SUR PROFILE CHAPE HORIZONTAL

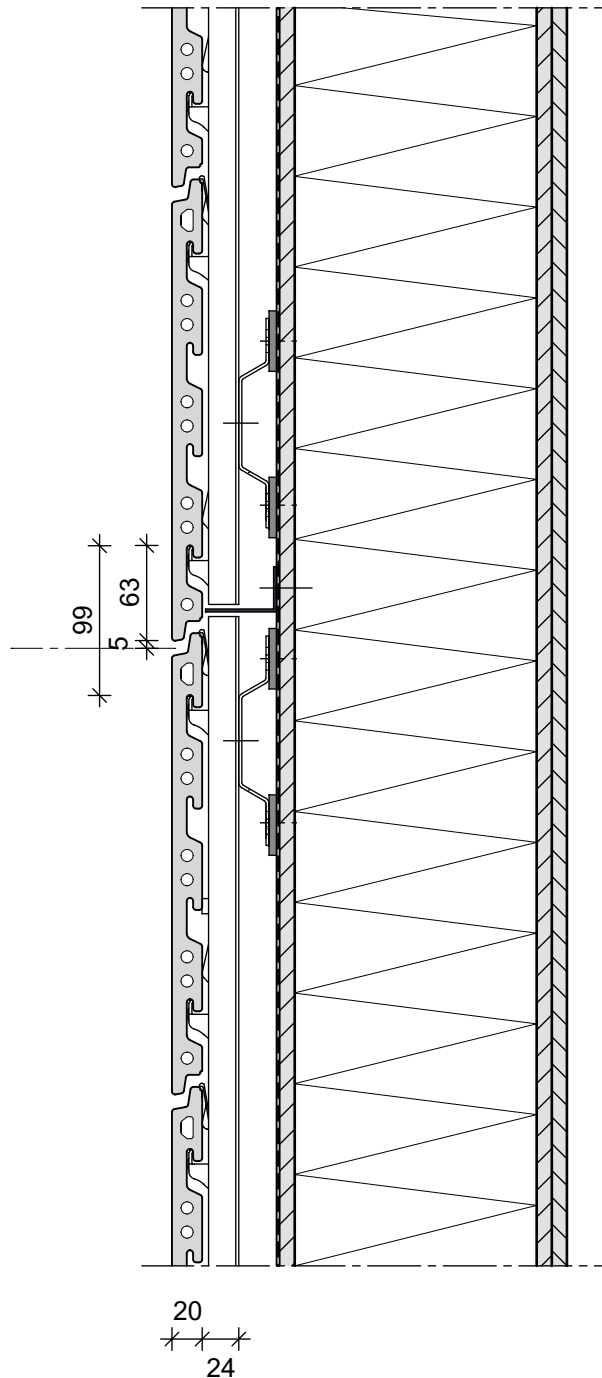


# BRANDSPERRE

FIRE BARRIER  
PARE-FEU

KeraTwin® K20

OMEGAPROFIL AUF HORIZONTAL EM HUTPROFIL  
OMEGA SYSTEM RAIL ON HORIZONTAL HAT PROFILE  
RAIL SYSTEME OMEGA SUR PROFILE CHAPE HORIZONTAL

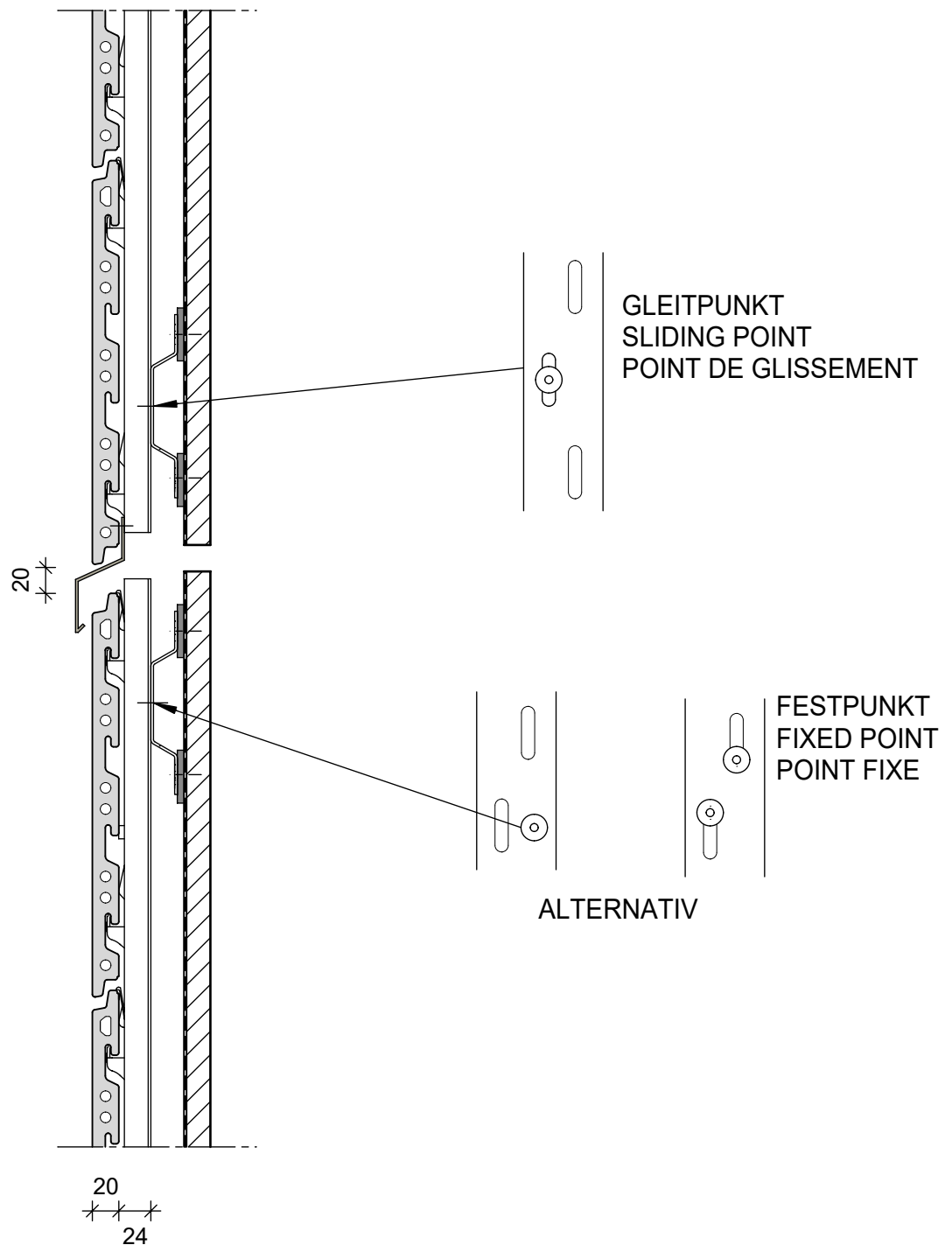


# GESCHOSSAUSGLEICH

FLOOR EXPANSION JOINT  
JOINT DE DILATATION ENTRE ETAGES

KeraTwin® K20

OMEGAPROFIL AUF HORIZONTALM HUTPROFIL  
OMEGA SYSTEM RAIL ON HORIZONTAL HAT PROFILE  
RAIL SYSTEME OMEGA SUR PROFILE CHAPE HORIZONTAL



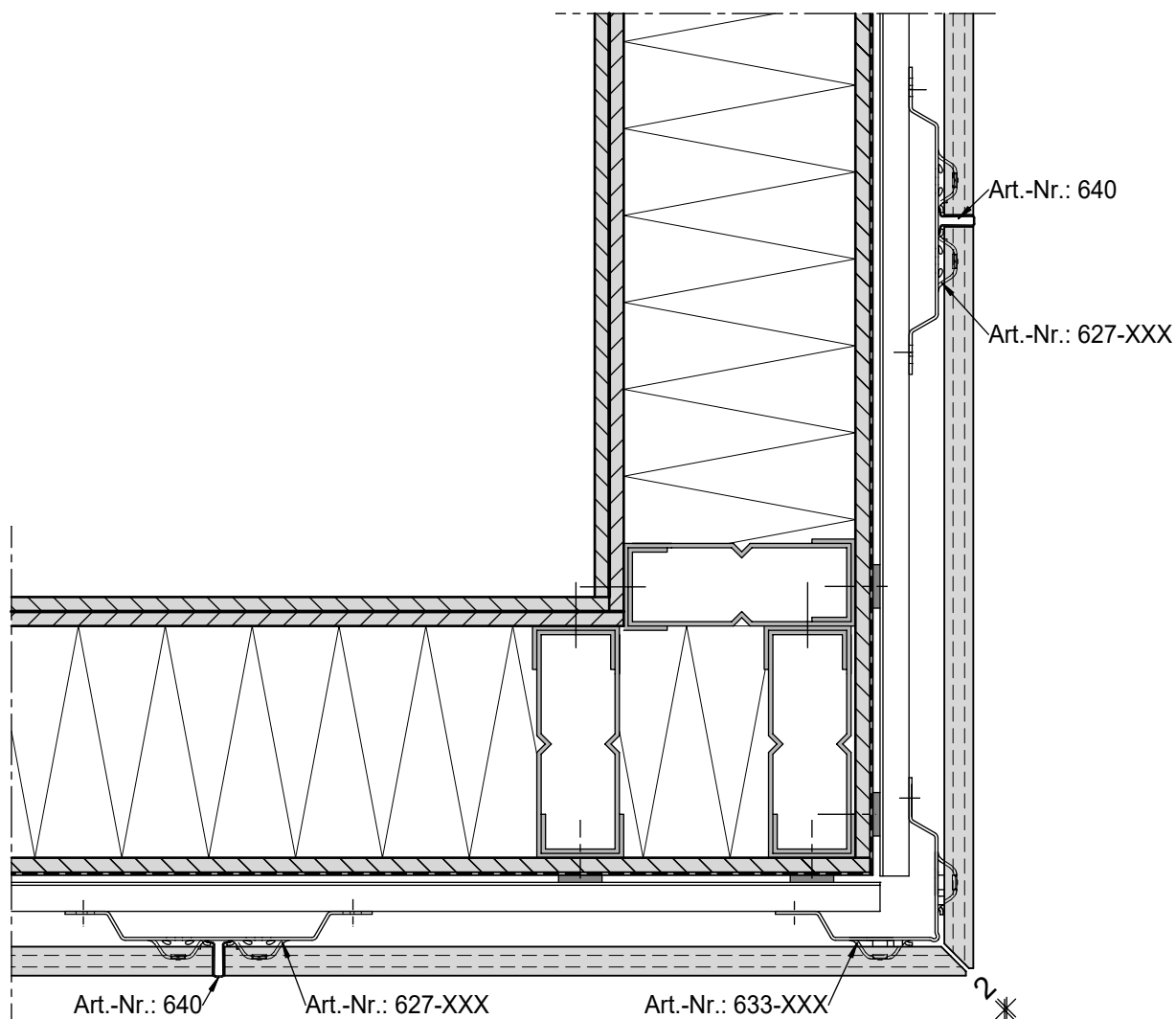


# AUSSENECKE MIT GEHRUNGSPLETTEN

EXTERNAL ANGLE WITH MITRED TILES  
ANGLE EXTERIEUR AVEC CARREAUX EN BIAIS

KeraTwin® K20

OMEGAPROFIL AUF HORIZONTALER HUTPROFIL  
OMEGA SYSTEM RAIL ON HORIZONTAL HAT PROFILE  
RAIL SYSTEME OMEGA SUR PROFILE CHAPE HORIZONTAL

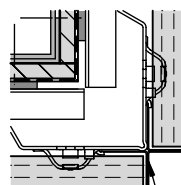
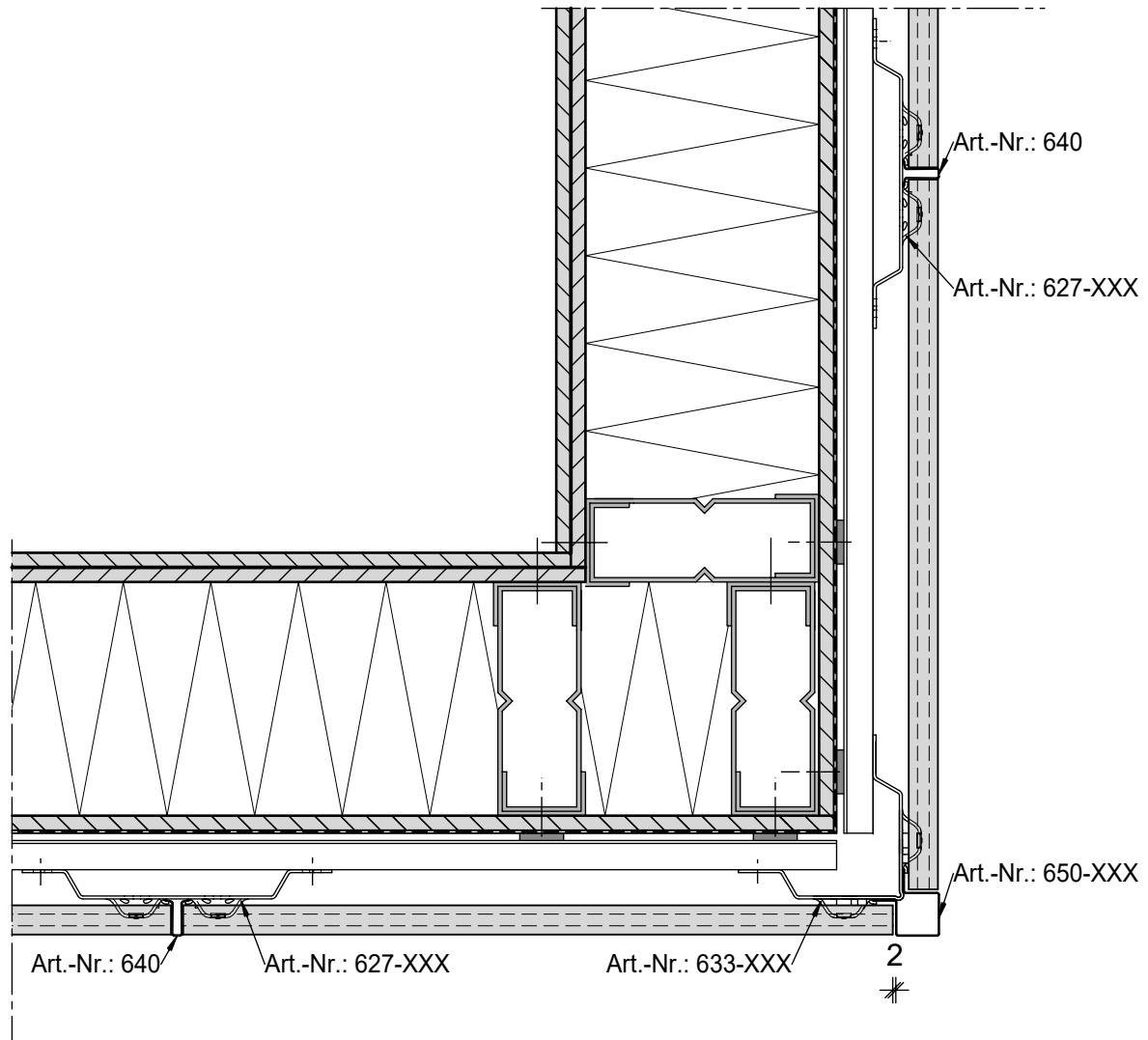


# AUSSENECKE MIT ECKPROFIL

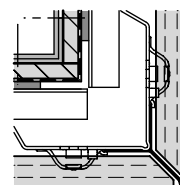
EXTERNAL ANGLE WITH CORNER PROFILE  
ANGLE EXTERIEUR AVEC PROFILE D' ANGLE

KeraTwin® K20

OMEGAPROFIL AUF HORIZONTALM HUTPROFIL  
OMEGA SYSTEM RAIL ON HORIZONTAL HAT PROFILE  
RAIL SYSTEME OMEGA SUR PROFILE CHAPE HORIZONTAL



Art.-Nr.: 654-XXX



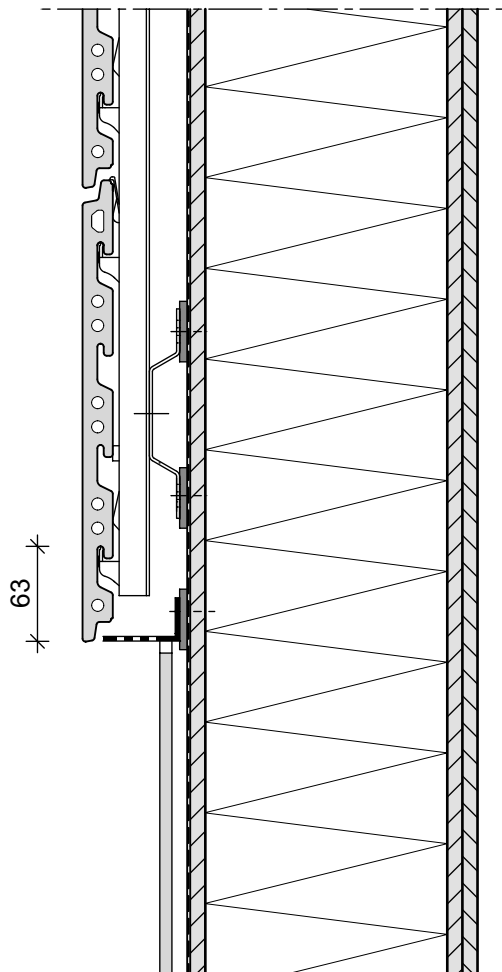
Art.-Nr.: 652-XXX

# SOCKELANSCHLUSS

CONNECTION TO PLINTH  
RACCORD DE SOCLE

KeraTwin® K20

OMEGAPROFIL AUF HORIZONTALER HUTPROFIL  
OMEGA SYSTEM RAIL ON HORIZONTAL HAT PROFILE  
RAIL SYSTEME OMEGA SUR PROFILE CHAPE HORIZONTAL

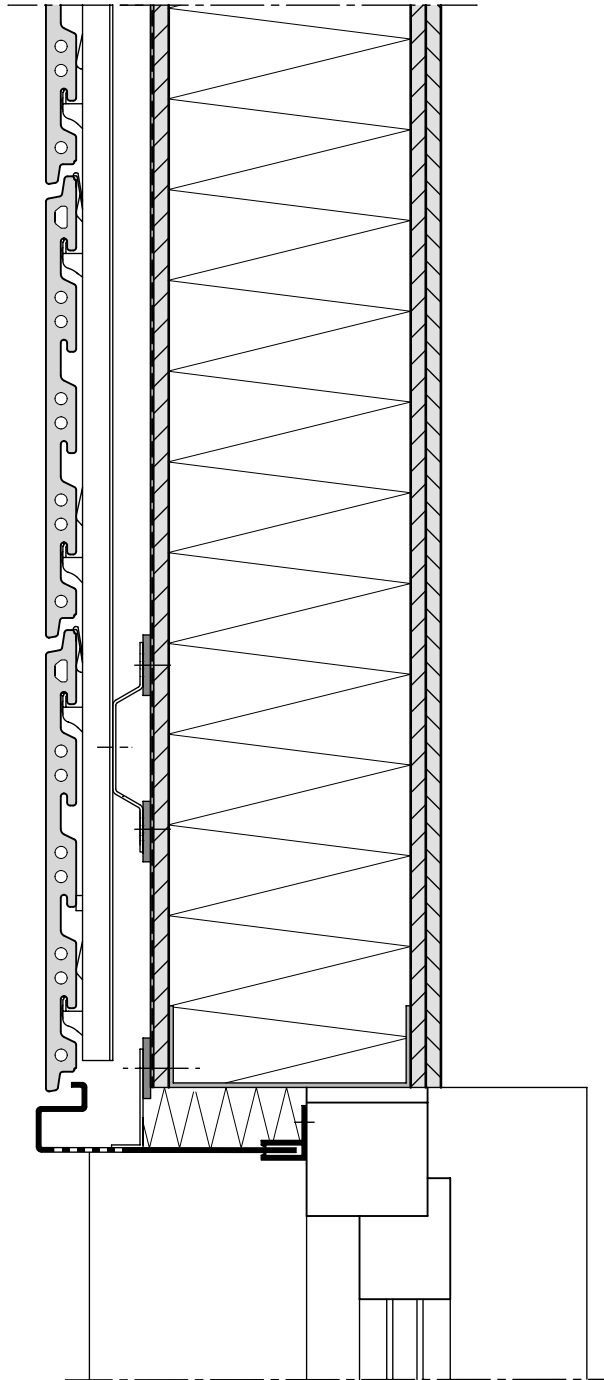


# FENSTERSTURZ

WINDOW LINTEL  
LINTEAU DE LA FENETRE

KeraTwin® K20

OMEGAPROFIL AUF HORIZONTALM HUTPROFIL  
OMEGA SYSTEM RAIL ON HORIZONTAL HAT PROFILE  
RAIL SYSTEME OMEGA SUR PROFILE CHAPE HORIZONTAL

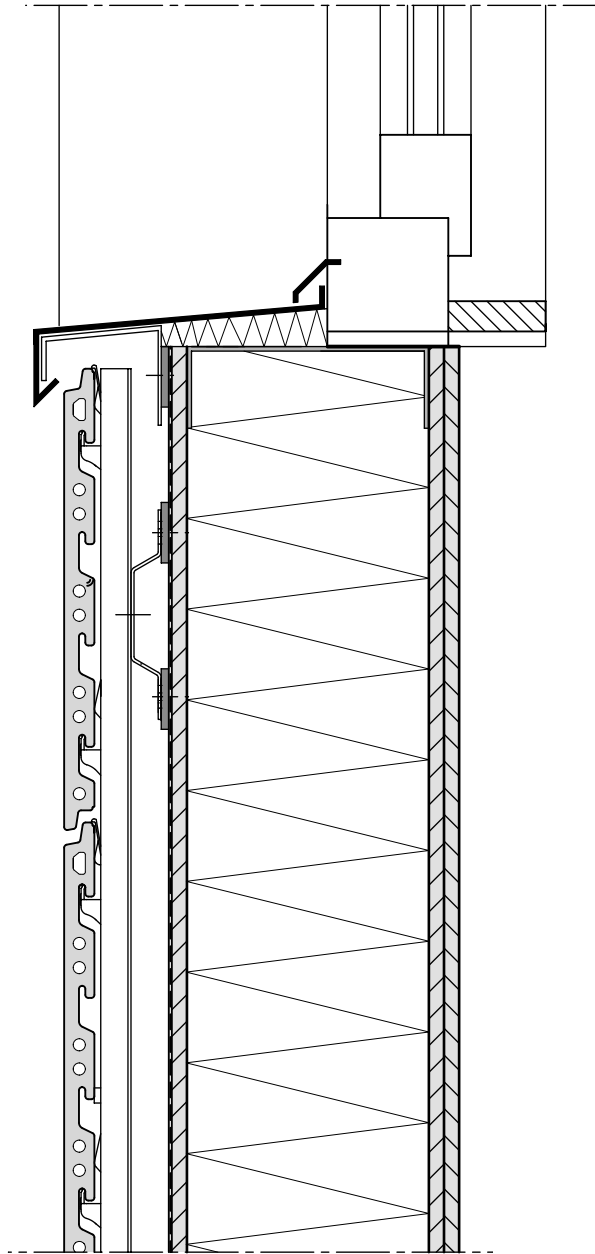


# FENSTERBANK

WINDOW SILL  
APPUI DE FENETRE

KeraTwin® K20

OMEGAPROFIL AUF HORIZONTALLEM HUTPROFIL  
OMEGA SYSTEM RAIL ON HORIZONTAL HAT PROFILE  
RAIL SYSTEME OMEGA SUR PROFILE CHAPE HORIZONTAL

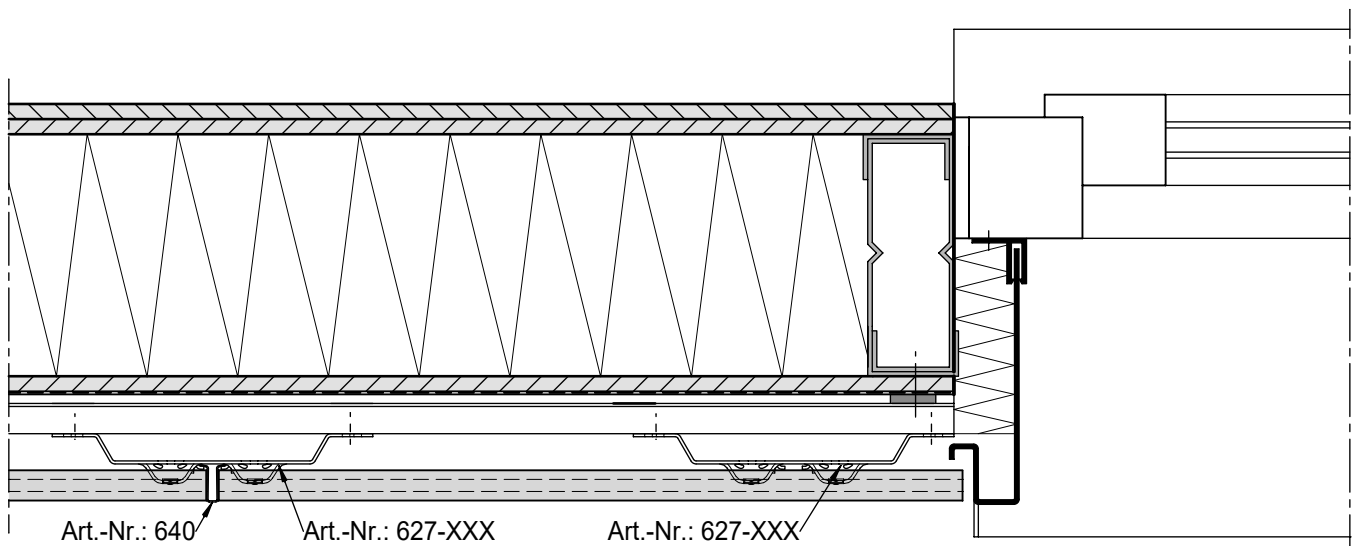


# FENSTERLEIBUNG MIT BLECH

EMBRASURE OF THE WINDOW  
EMBRASURE DE FENETRE

KeraTwin® K20

OMEGAPROFIL AUF HORIZONTALLEM HUTPROFIL  
OMEGA SYSTEM RAIL ON HORIZONTAL HAT PROFILE  
RAIL SYSTEME OMEGA SUR PROFILE CHAPE HORIZONTAL

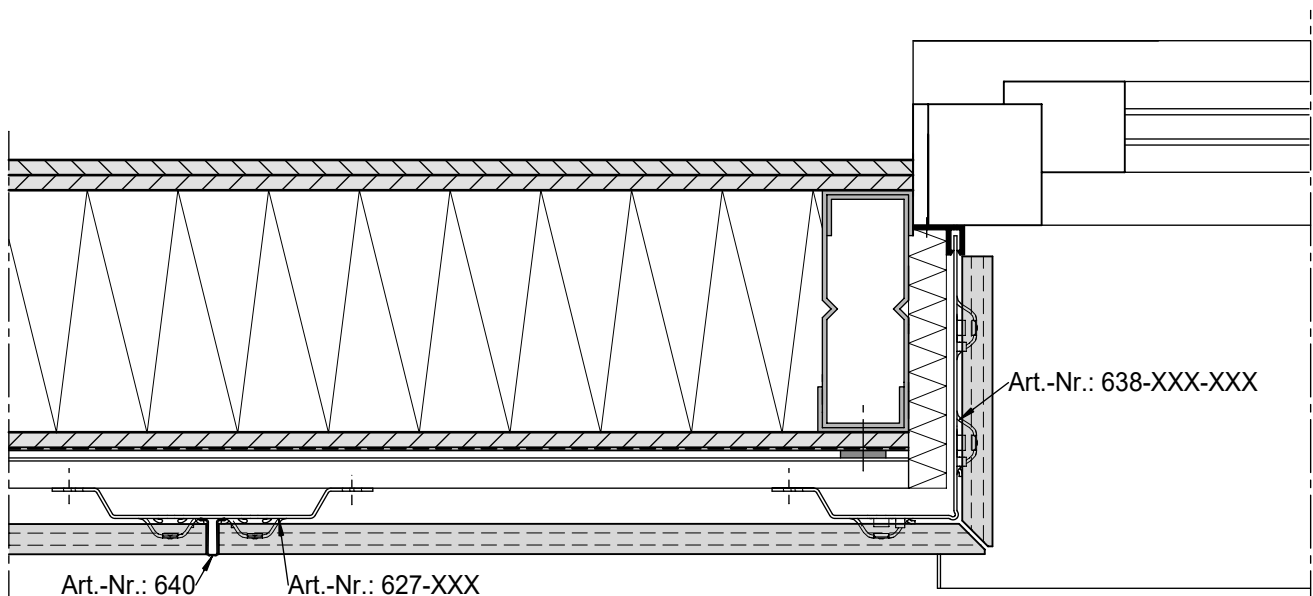


# FENSTERLEIBUNG MIT KERATWIN

WINDOW EMBRASURE WITH KERATWIN  
EMBRASURE DE FENETRE AVEC KERATWIN

KeraTwin® K20

OMEGAPROFIL AUF HORIZONTALM HUTPROFIL  
OMEGA SYSTEM RAIL ON HORIZONTAL HAT PROFILE  
RAIL SYSTEME OMEGA SUR PROFILE CHAPE HORIZONTAL

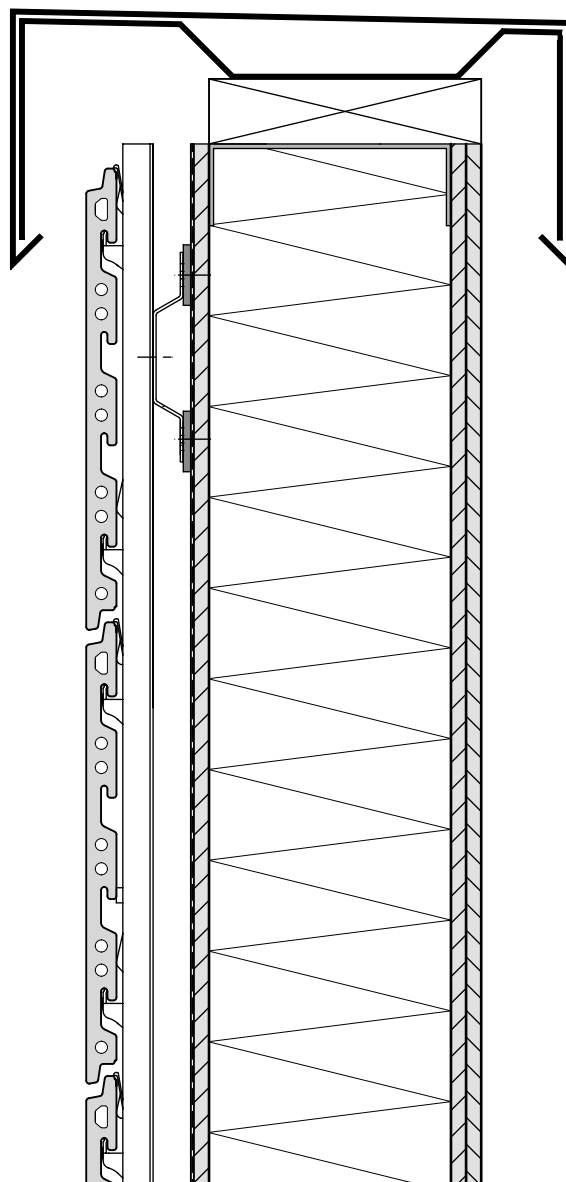


# ATTIKAABSCHLUSS

COVERING OF THE ROOF PARAPET  
RECOUVREMENT D'ATTIQUE

KeraTwin® K20

OMEGAPROFIL AUF HORIZONTALM HUTPROFIL  
OMEGA SYSTEM RAIL ON HORIZONTAL HAT PROFILE  
RAIL SYSTEME OMEGA SUR PROFILE CHAPE HORIZONTAL



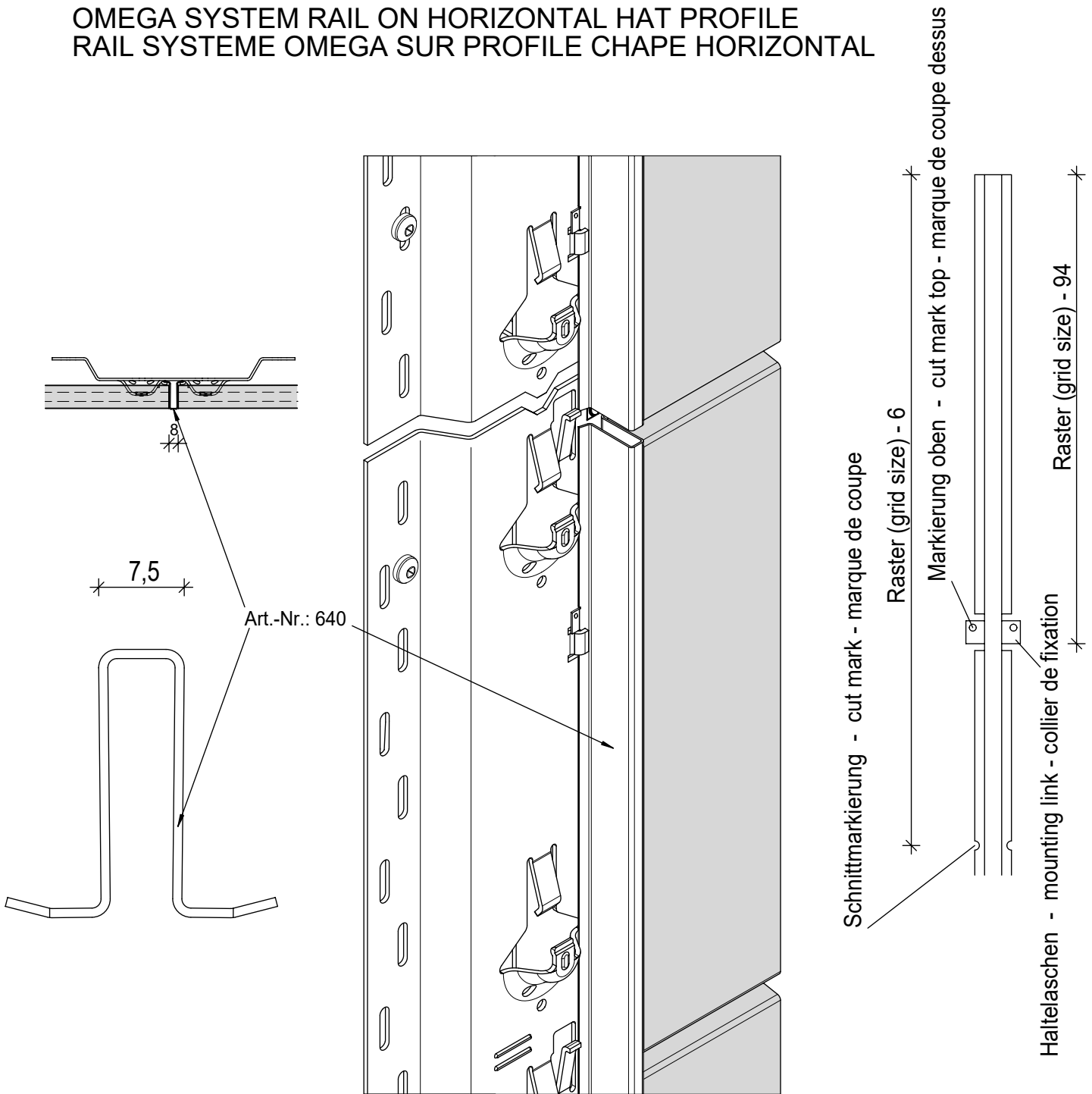


# FUGENPROFIL

JOINT PROFILE  
PROFILE A JOINTS

KeraTwin® K20

OMEGAPROFIL AUF HORIZONTALM HUTPROFIL  
OMEGA SYSTEM RAIL ON HORIZONTAL HAT PROFILE  
RAIL SYSTEME OMEGA SUR PROFILE CHAPE HORIZONTAL

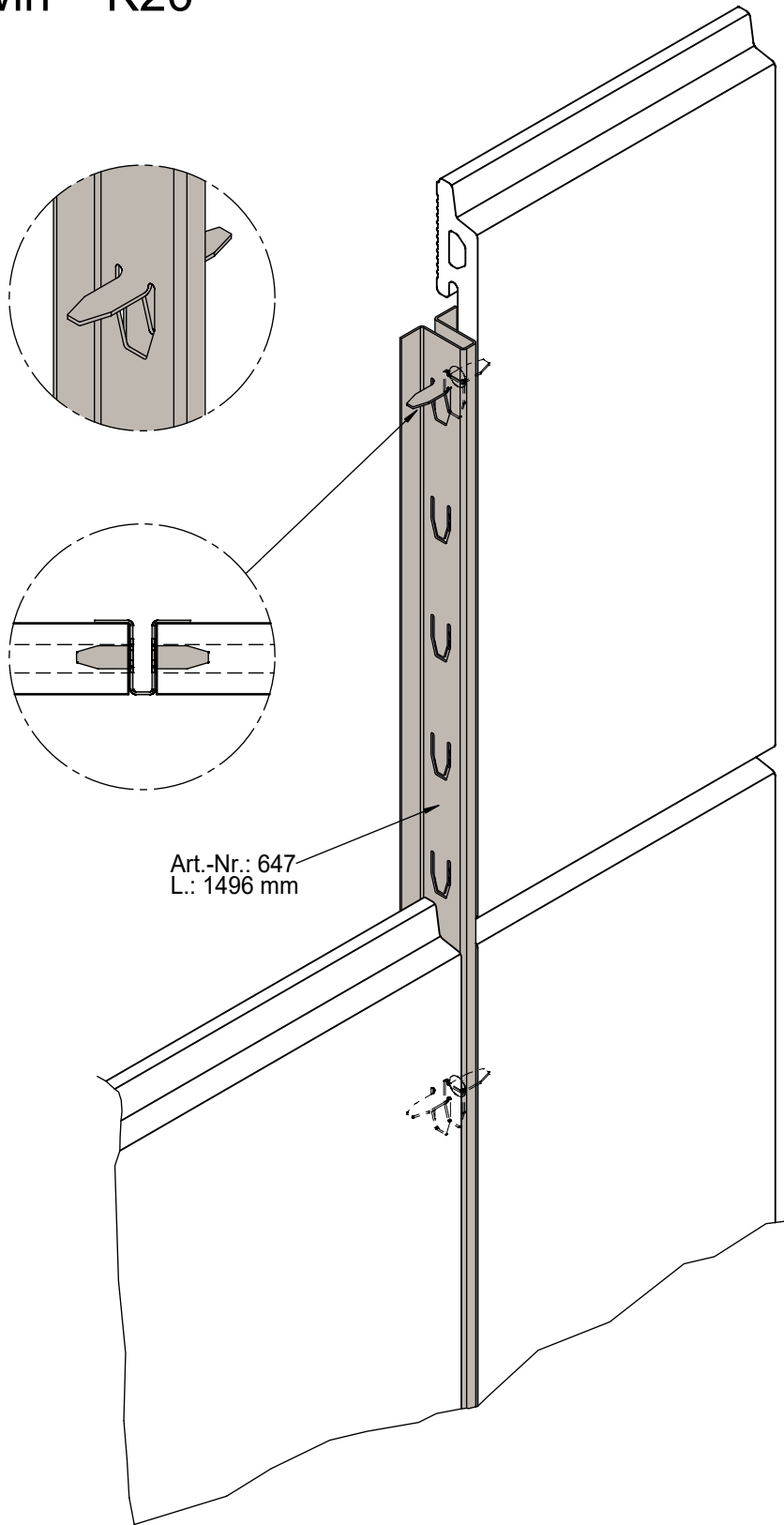


# FUGENSTECKPROFIL

JOINT PLUG IN PROFIL

PROFILÉ DE JOINT POUR CLIPPAGE

KeraTwin® K20



Art.-Nr.: 647  
L.: 1496 mm

# SYSTEMSCHNITT HORIZONTAL Einfeldträger mit beidseitigem Kragarm

HORIZONTAL SECTION Single-span girder with cantilever on both sides

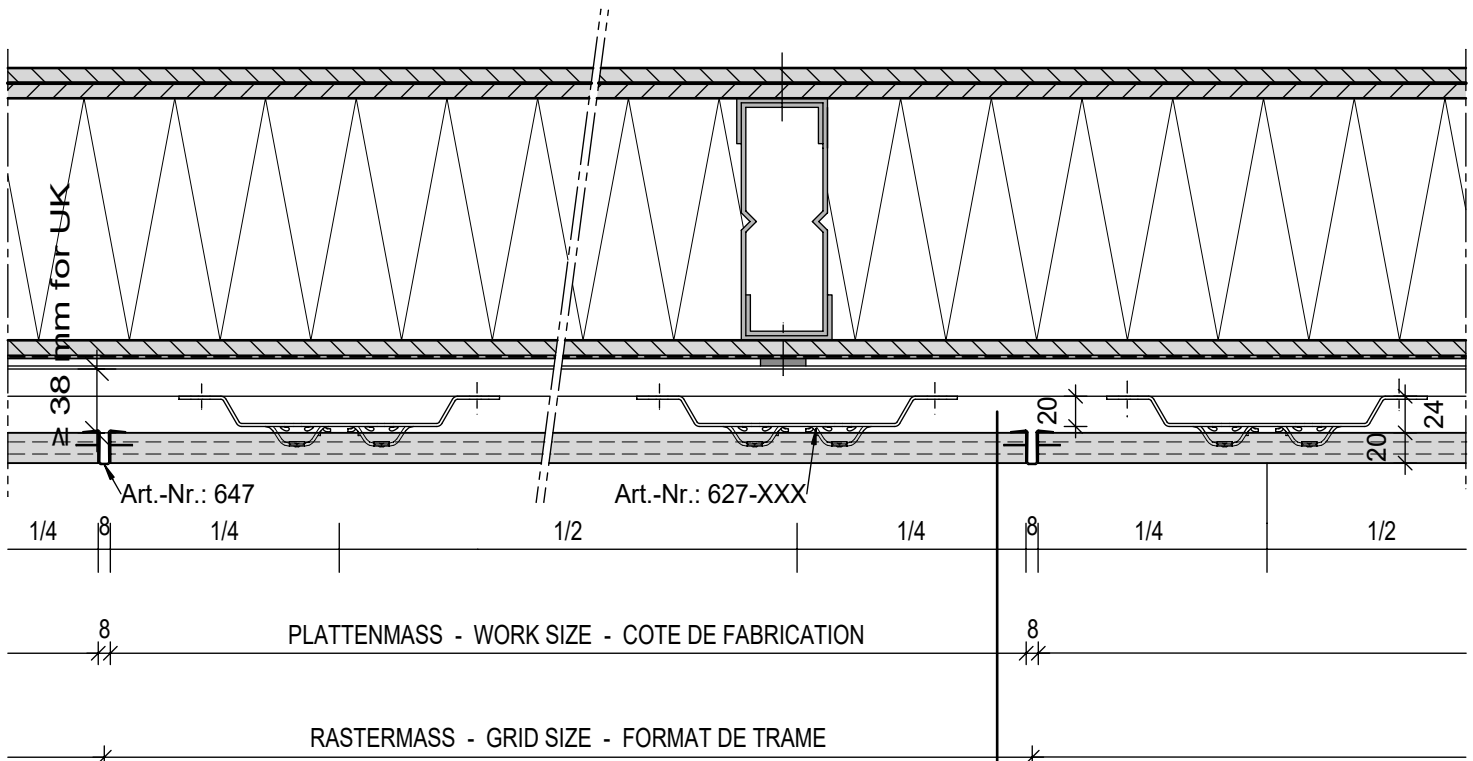
COUPE HORIZONTALE Poutre mono-travée avec cantilever des deux côtés

## KeraTwin® K20

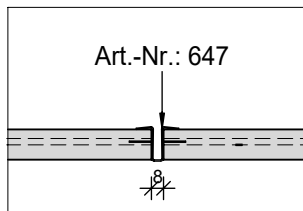
OMEGAPROFIL AUF HORIZONTALLEM HUTPROFIL

OMEGA SYSTEM RAIL ON HORIZONTAL HAT PROFILE

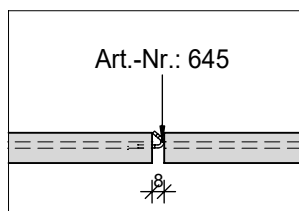
RAIL SYSTEME OMEGA SUR PROFILE CHAPE HORIZONTAL



### ALTERNATIVE



FUGENSTECKPROFIL  
PLUG IN PROFIL  
PROFILÉ DE JOINT POUR CLIPPAGE



FUGENABSTANDSHALTER  
JOINT SPACER  
ENTRETOISE DE JOINTS

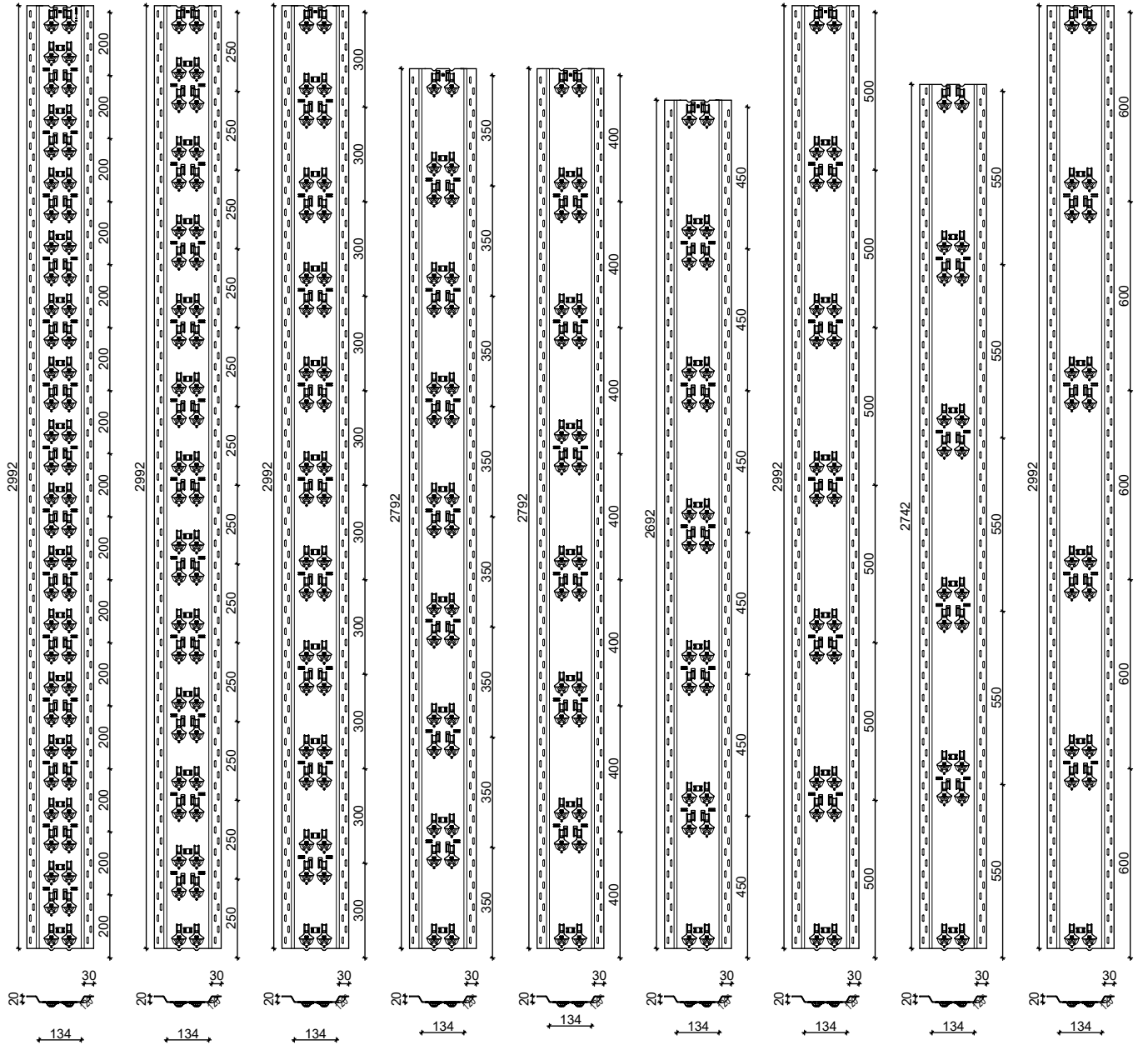
Note for the UK market:  
The air gap has to be  
≥38 mm

# LIEFERLÄNGEN 1 OMEGAPROFIL K20

LENGTHS SUPPLIED OF OMEGA SYSTEM RAIL K20

LONGUEURS LIVRABLES DU SYSTEME RAIL OMEGA K20

KeraTwin® K20



RASTER 20,0 cm 15 REIHEN  
 RASTER 25,0 cm 12 REIHEN  
 RASTER 30,0 cm 10 REIHEN  
 RASTER 35,0 cm 8 REIHEN  
 RASTER 40,0 cm 7 REIHEN  
 RASTER 45,0 cm 6 REIHEN  
 RASTER 50,0 cm 6 REIHEN  
 RASTER 55,0 cm 5 REIHEN  
 RASTER 60,0 cm 5 REIHEN

Art.-Nr.: 624-XXX beschichtet / painted / coloré

Art.-Nr.: 627-XXX unbeschichtet / bright / métallique

DEUTSCHE STEINZEUG **AGROB BUCHTAL** AGROB BUCHTAL GmbH Architektenservice D - 92521 Schwarzenfeld  
 Tel. 09435 / 391 3238 e-mail: as.fassade@deutsche-steinzeug.de

STAND: September 2020

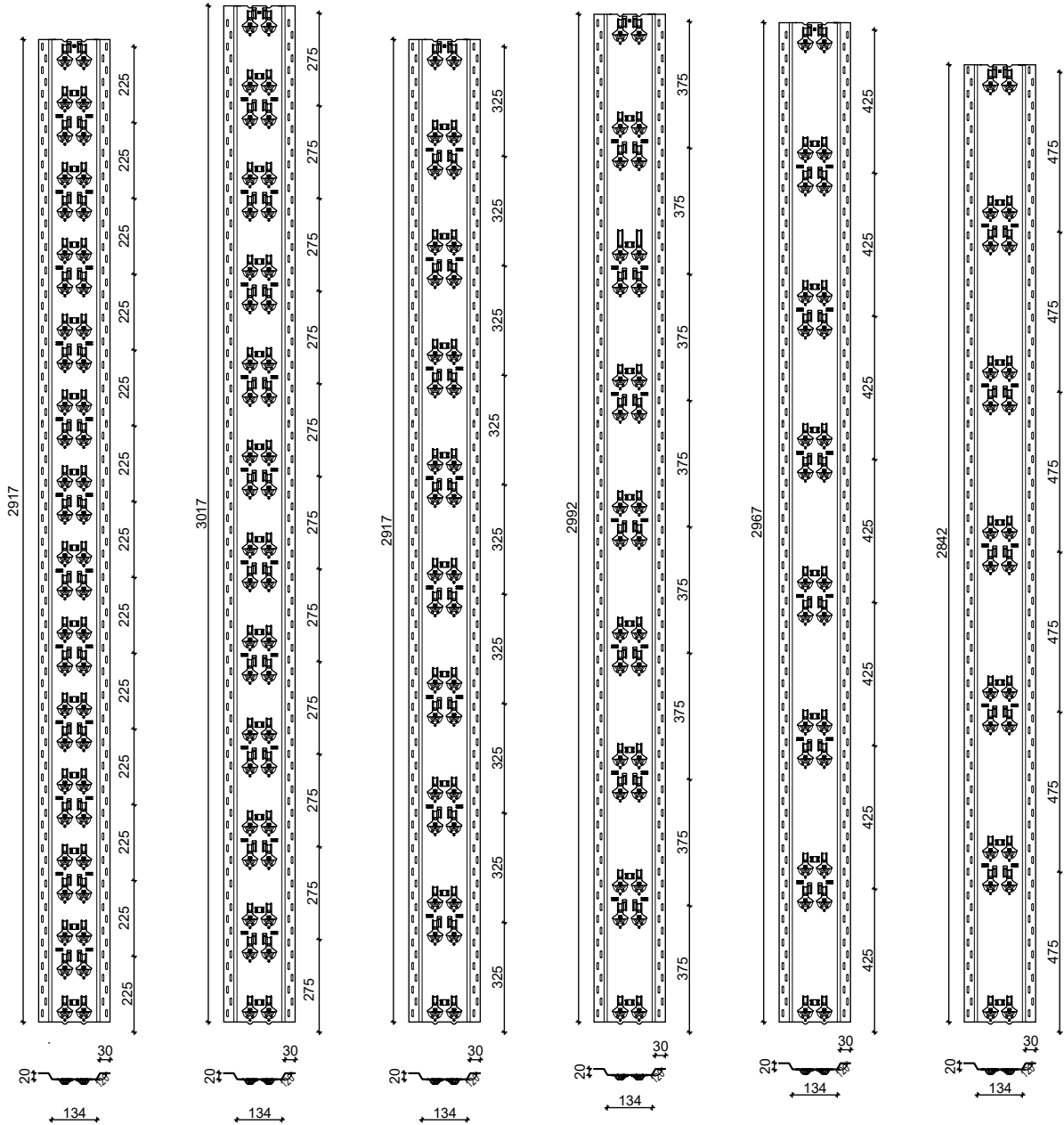
DIES SIND UNVERBINDLICHE KONSTRUKTIONSVORSCHLÄGE, DIE FÜR JEDES PROJEKT AUF ANWENDBARKEIT UND RICHTIGKEIT GEPRÜFT WERDEN MÜSSEN.  
 THESE ARE NOT BINDING CONSTRUCTION PROPOSALS WHICH HAVE TO BE VERIFIED FOR EACH INDIVIDUAL PROJECT AS REGARDS APPLICABILITY AND CORRECTNESS.  
 IL S' AGIT DE PROPOSITIONS DE CONSTRUCTION SANS ENGAGEMENT DE NOTRE PART QUI DOIVENT ETRE VERIFIEES POUR CHAQUE PROJET A LEUR EXACTITUDE ET FAISABILITE.

# LIEFERLÄNGEN 2 OMEGAPROFIL K20

LENGTHS SUPPLIED OF OMEGA SYSTEM RAIL K20

LONGUEURS LIVRABLES DU SYSTEME RAIL OMEGA K20

KeraTwin® K20



RASTER 22,5 cm  
13 REIHEN

RASTER 27,5 cm  
11 REIHEN

RASTER 32,5 cm  
9 REIHEN

RASTER 37,5 cm  
8 REIHEN

RASTER 42,5 cm  
7 REIHEN

RASTER 47,5 cm  
6 REIHEN

Art.-Nr.: 624-XXX beschichtet / painted / coloré

Art.-Nr.: 627-XXX unbeschichtet / bright / métallique

DEUTSCHE STEINZEUG **AGROB BUCHTAL**

AGROB BUCHTAL GmbH Architektenservice D - 92521 Schwarzenfeld  
Tel. 09435 / 391 3238 e-mail: as.fassade@deutsche-steinzeug.de

STAND: September 2020

DIES SIND UNVERBINDLICHE KONSTRUKTIONSVORSCHLÄGE, DIE FÜR JEDES PROJEKT AUF ANWENDBARKEIT UND RICHTIGKEIT GEPRÜFT WERDEN MÜSSEN.  
THESE ARE NOT BINDING CONSTRUCTION PROPOSALS WHICH HAVE TO BE VERIFIED FOR EACH INDIVIDUAL PROJECT AS REGARDS APPLICABILITY AND CORRECTNESS.  
IL S' AGIT DE PROPOSITIONS DE CONSTRUCTION SANS ENGAGEMENT DE NOTRE PART QUI DOIVENT ETRE VERIFIEES POUR CHAQUE PROJET A LEUR EXACTITUDE ET FAISABILITE.