

STONE DUO

One series, two designs



In the new Stone Duo series, a harmonious stone mix design with fine grains and natural veining meets the expressive classic Ceppo di Gré.

This combination with its versatility, naturalness and elegance makes it the ideal solution for designing high-quality residential and commercial areas.



The porcelain stoneware series offers a selection of natural, warm colors – thus making the tiles the perfect companions of a durable and exclusive room composition.



The Twins cut decor combines the designs of Stone and Ceppo to create an effective mix of square and rectangular shapes. The uniform arrangement gives the surface a harmonious look and offers a wide variety of design options for wall and floor surfaces.







Natural elegance

The Stone design combines soft grains, natural veining and subtle shading to create a cosy look. The color range includes shades from beige to anthracite and underlines the originality and elegance of the tiles.

The tiles of the Stone Duo series are all provided with the innovative and easy-to-clean Hytect surface. This feature not only ensures easy care, but also long-lasting beauty and makes the series the ideal choice for discerning clients.





Aesthetic functionality

The basis for the Ceppo design comes from the natural stone Ceppo di Gré, which is quarried on Lake Iseo in Italy. This natural stone is the decorative element of the series and gives the tiles their characteristic beauty. The tiles can be laid alone or combined with the stone surface of the series, and the colors of both designs are harmoniously matched to one another.

The porcelain stoneware series not only offers aesthetic elegance, but also practical versatility. With slip-resistance class R10/A+B, it is equally suitable for use in private and public areas without compromising on safety.

Mosaics

5 x 5 cm



435948H
Design Stone
light grey, structured, matt

5 x 5 cm



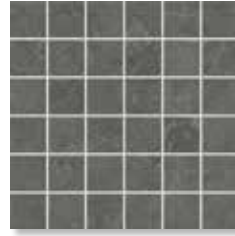
435949H
Design Stone
mud, structured, matt

5 x 5 cm



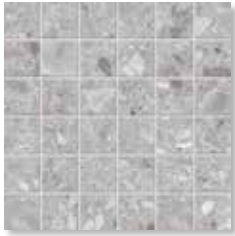
435950H
Design Stone
beige, structured, matt

5 x 5 cm



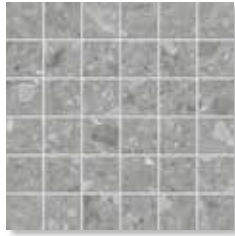
435951H
Design Stone
anthracite, structured, matt

5 x 5 cm



435952H
Design Ceppo
light grey, structured, matt

5 x 5 cm



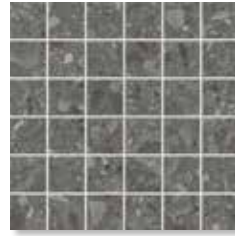
435953H
Design Ceppo
mud, structured, matt

5 x 5 cm



435954H
Design Ceppo
beige, structured, matt

5 x 5 cm



435955H
Design Ceppo
anthracite, structured, matt

Decoration Element Twins

30 x 30 cm



435980H
light grey, structured, matt

30 x 30 cm



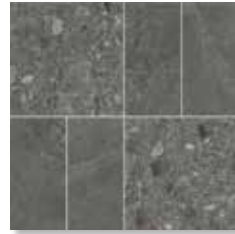
435981H
mud, structured, matt

30 x 30 cm



435982H
beige, structured, matt

30 x 30 cm



435983H
anthracite, structured, matt

Floor Tiles



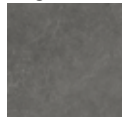
light grey



mud



beige



anthracite

30 x 60 cm



435956H
Design Stone
light grey, structured, matt

30 x 60 cm



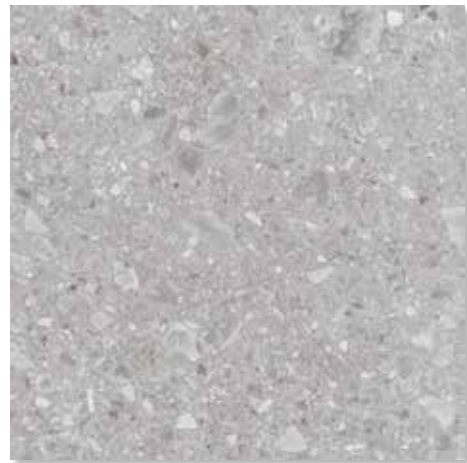
435960H
Design Ceppo
light grey, structured, matt

60 x 60 cm



435964H
Design Stone
light grey, structured, matt

60 x 60 cm



435968H
Design Ceppo
light grey, structured, matt

Floor Tiles

60 x 120 cm



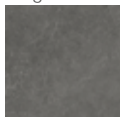
light grey



mud



beige



anthracite



435972H
Design Stone
light grey, structured, matt

60 x 120 cm



435976H
Design Ceppo
light grey, structured, matt

Stair Tiles with grooves

30 x 60 cm



435984H
Design Stone
light grey, structured, matt

30 x 60 cm



435988H
Design Ceppo
light grey, structured, matt

Skirting, rounded

7 x 60 cm



435992H
Design Stone
light grey, structured, matt

7 x 60 cm

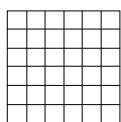


435996H
Design Ceppo
light grey, structured, matt

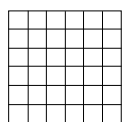
„Stone“

„Ceppo“

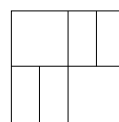
„Twins“

Mosaic 5 x 5 cmThermoplastic bonding on the reverse,
sheet 297 x 297 mm

5 x 5 cm



5 x 5 cm



30 x 30 cm

Technical data

| | | | |
|-----------------------|---------------------|---------------------|---------------------|
| Work size | 47 x 47 x 9 mm | 47 x 47 x 9 mm | 297 x 297 x 9 mm |
| Surface | structured, matt | structured, matt | structured, matt |
| Slip resistance | R10/A+B | R10/A+B | R10/A+B |
| Hytect | ✓ | ✓ | ✓ |
| Rectified | ✓ | ✓ | ✓ |
| Stress group | 2 | 2 | 2 |
| Material type | Porcelain stoneware | Porcelain stoneware | Porcelain stoneware |
| Product standard | Bla | Bla | Bla |
| Frost-proof | ✓ | ✓ | ✓ |
| Color Shade Variation | V2 | V3 | V2 |

Logistical data

| | | | |
|-----------------------------|-----------------------|-----------------------|---------|
| m ² /m - unit | 11.111/m ² | 11.111/m ² | 3.333/m |
| m ² /m - kg | 19.833/m ² | 19.833/m ² | 5.942/m |
| Package - unit | 12 Sheets | 12 Sheets | 4 |
| Package - m ² /m | 1.080 m ² | 1.080 m ² | 1.200 m |
| Package - kg | 21.420 | 21.420 | 7.132 |
| Pallet - m ² | 32.400 | 32.400 | |
| Pallet - kg | 642.600 | 642.600 | |

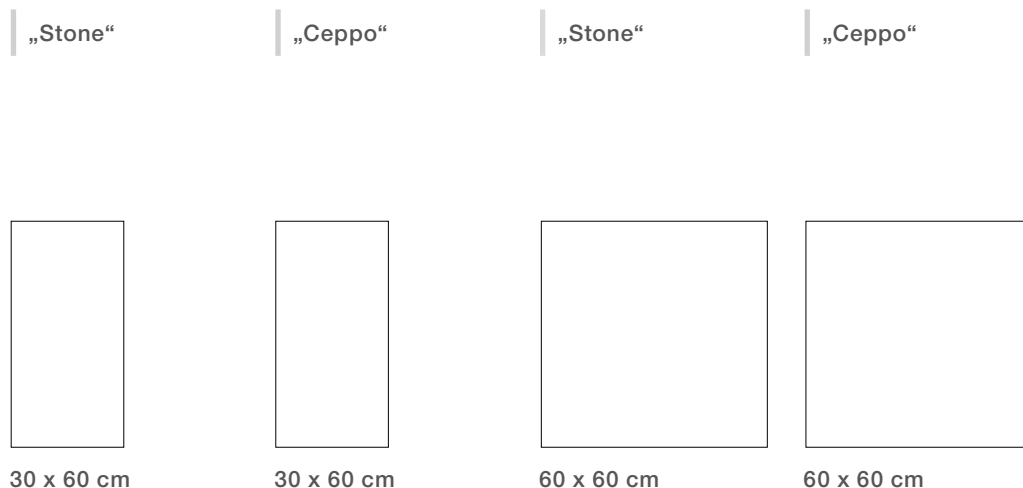
Price group

| | | |
|------------------------|------------------------|-------------|
| C293 (m ²) | C293 (m ²) | C517 (pce.) |
|------------------------|------------------------|-------------|

Article

| | | | |
|------------|---------|---------|---------|
| light grey | 435948H | 435952H | 435980H |
| mud | 435949H | 435953H | 435981H |
| beige | 435950H | 435954H | 435982H |
| anthracite | 435951H | 435955H | 435983H |

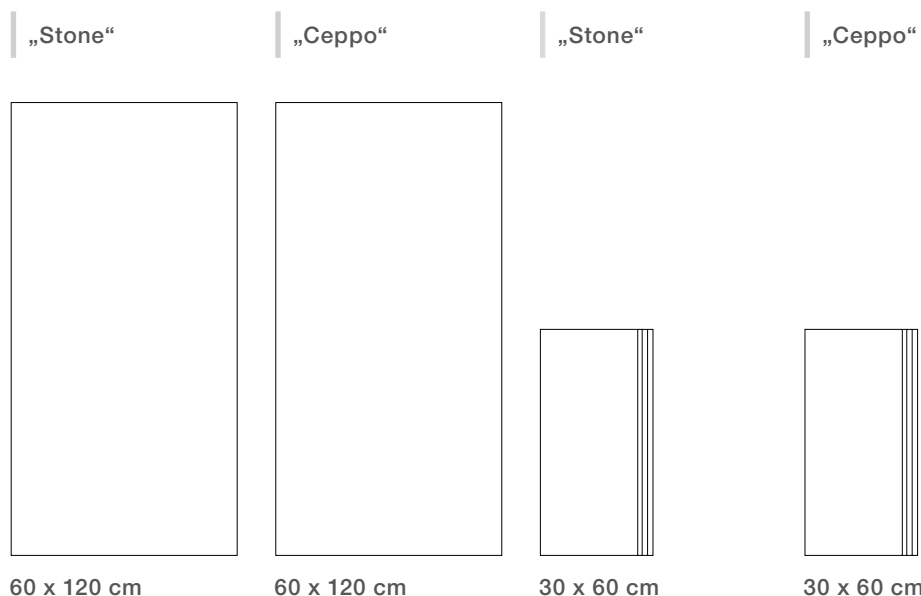
Floor Tiles



| | „Stone“ | „Ceppo“ | „Stone“ | „Ceppo“ |
|--------------------------|------------------------|------------------------|------------------------|------------------------|
| | 30 x 60 cm | 30 x 60 cm | 60 x 60 cm | 60 x 60 cm |
| Technical data | | | | |
| Work size | 297 x 597 x 9 mm | 297 x 597 x 9 mm | 597 x 597 x 9 mm | 597 x 597 x 9 mm |
| Surface | structured, matt | structured, matt | structured, matt | structured, matt |
| Slip resistance | R10/A+B | R10/A+B | R10/A+B | R10/A+B |
| Hytect | ✓ | ✓ | ✓ | ✓ |
| Rectified | ✓ | ✓ | ✓ | ✓ |
| Stress group | 2 | 2 | 2 | 2 |
| Material type | Porcelain stoneware | Porcelain stoneware | Porcelain stoneware | Porcelain stoneware |
| Product standard | Bla | Bla | Bla | Bla |
| Frost-proof | ✓ | ✓ | ✓ | ✓ |
| Color Shade Variation | V2 | V3 | V2 | V3 |
| Logistical data | | | | |
| m ² - unit | 5.556 | 5.556 | 2.778 | 2.778 |
| m ² - kg | 19.907 | 19.907 | 20.371 | 20.371 |
| Package - unit | 7 | 7 | 3 | 3 |
| Package - m ² | 1.260 | 1.260 | 1.080 | 1.080 |
| Package - kg | 25.081 | 25.081 | 21.999 | 21.999 |
| Pallet - m ² | 50.396 | 50.396 | 45.356 | 45.356 |
| Pallet - kg | 1,003.240 | 1,003.240 | 923.958 | 923.958 |
| Price group | | | | |
| | C116 (m ²) | C116 (m ²) | C128 (m ²) | C128 (m ²) |
| Article | | | | |
| light grey | 435956H | 435960H | 435964H | 435968H |
| mud | 435957H | 435961H | 435965H | 435969H |
| beige | 435958H | 435962H | 435966H | 435970H |
| anthracite | 435959H | 435963H | 435967H | 435971H |

Floor tiles ^{1/2}

Stair tile with grooves



Technical data

| | | | | |
|-----------------------|---------------------|---------------------|---------------------|---------------------|
| Work size | 597 x 1197 x 9 mm | 597 x 1197 x 9 mm | 297 x 597 x 9 mm | 297 x 597 x 9 mm |
| Surface | structured, matt | structured, matt | structured, matt | structured, matt |
| Slip resistance | R10/A+B | R10/A+B | R10/A+B | R10/A+B |
| Hytect | ✓ | ✓ | ✓ | ✓ |
| Rectified | ✓ | ✓ | ✓ | ✓ |
| Stress group | 2 | 2 | 2 | 2 |
| Material type | Porcelain stoneware | Porcelain stoneware | Porcelain stoneware | Porcelain stoneware |
| Product standard | Bla | Bla | Bla | Bla |
| Frost-proof | ✓ | ✓ | ✓ | ✓ |
| Color Shade Variation | V2 | V3 | V2 | V3 |

Logistical data

| | | | | |
|-----------------------------|-----------------------|-----------------------|---------|---------|
| m ² /m - unit | 1.388/m ² | 1.388/m ² | 1.667/m | 1.667/m |
| m ² /m - kg | 21.132/m ² | 21.132/m ² | 5.973/m | 5.973/m |
| Package - unit | 2 | 2 | 7 | 7 |
| Package - m ² /m | 1.440 m ² | 1.440 m ² | 4.199 m | 4.199 m |
| Package - kg | 30.450 | 30.450 | 25.081 | 25.081 |
| Pallet - m ² | 50.432 | 50.432 | | |
| Pallet - kg | 1,065.75 | 1,065.75 | | |

| | | | | |
|--------------------|------------------------|------------------------|-------------|-------------|
| Price group | C149 (m ²) | C149 (m ²) | C474 (pce.) | C474 (pce.) |
|--------------------|------------------------|------------------------|-------------|-------------|

Article

| | | | | |
|------------|---------|---------|----------------|----------------|
| light grey | 435972H | 435976H | <i>435984H</i> | <i>435988H</i> |
| mud | 435973H | 435977H | <i>435985H</i> | <i>435989H</i> |
| beige | 435974H | 435978H | <i>435986H</i> | <i>435990H</i> |
| anthracite | 435975H | 435979H | <i>435987H</i> | <i>435991H</i> |

¹ Please note: special pallet. No return, no exchange.

² High weight only to carry with two persons.

All articles in italics: made to order: goods cannot be returned and/or cancelled once ordered.

Skirting, rounded

„Stone“

„Ceppo“



7 x 60 cm



7 x 60 cm

Technical data

| | | |
|-----------------------|---------------------|---------------------|
| Work size | 70 x 597 x 9 mm | 70 x 597 x 9 mm |
| Surface | structured, matt | structured, matt |
| Slip resistance | – | – |
| Hytect | ✓ | ✓ |
| Rectified | ✓ | ✓ |
| Stress group | – | – |
| Material type | Porcelain stoneware | Porcelain stoneware |
| Product standard | Bla | Bla |
| Frost-proof | ✓ | ✓ |
| Color Shade Variation | V2 | V3 |

Logistical data

| | | |
|----------------|--------|--------|
| m - unit | 1.667 | 1.667 |
| m - kg | 1.357 | 1.357 |
| Package - unit | 15 | 15 |
| Package - m | 8.998 | 8.998 |
| Package - kg | 12.210 | 12.210 |

| | | |
|--------------------|-------------|-------------|
| Price group | C440 (pce.) | C440 (pce.) |
|--------------------|-------------|-------------|

Article

| | | |
|------------|---------|---------|
| light grey | 435992H | 435996H |
| mud | 435993H | 435997H |
| beige | 435994H | 435998H |
| anthracite | 435995H | 435999H |

AGROB BUCHTAL Solar Ceramics GmbH
Buchtal 1, D-92521 Schwarzenfeld
Phone: +49 (0) 94 35-391-0
Fax: +49 (0) 94 35-391-34 52

Servaisstraße, D-53347 Alfter-Witterschlick
Phone: +49 (0) 228-391-0
Fax: +49 (0) 228-391-1273

E-mail info@agrob-buchtal.de
Internet www.agrob-buchtal.de

www.assenmacher.net

10/2024



DEUTSCHE STEINZEUG  **AGROB BUCHTAL**

The publisher does not assume liability for misprints.
Color deviations when compared to the original products may occur as a result of printing.