

THE ORIGINAL

Ceramic tiles – Dry installation



As fast as
your business.



DRYLILE

DRYILE

CONTENTS

The advantages
of Drytile

Pages 4 - 9

Installation

Pages 10 - 11

Innovative surface finishes
Hytect and Protecta

Pages 12 - 13

Series

Pages 14 - 39

| | |
|------------|---------|
| Area Pro | 16 - 19 |
| Factory | 20 - 21 |
| Like | 22 - 23 |
| Nova | 24 - 25 |
| Quarzit | 26 - 27 |
| Solid Rock | 28 - 29 |
| Stories | 30 - 31 |
| Strata | 32 - 33 |
| Trio | 34 - 35 |
| Valley | 36 - 37 |
| Walden | 38 - 39 |

Joint colors

Page 40



As fast as your business.

Ceramic tiles for dry installation

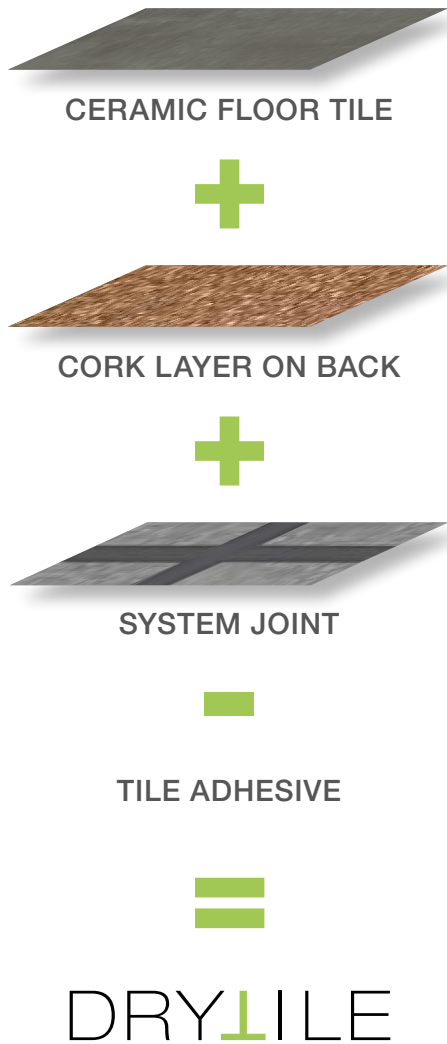
Time is one of the most valuable resources available; ceramic tiles are among the most sustainable floor coverings. Whether in shop fitting, catering, the hotel trade or administration: Drytile enables the installation of a high-quality floor with all of the advantages of ceramic. With a cork layer on the back and therefore without the use of adhesive, Drytile can be laid in record time. The system joint specially developed for Drytile rounds off the system for dry installation. This saves time, reduces closing times and optimises installation processes.



It's all about stories, Essen, Germany
Valley, earth-brown, slate, sand-beige, 60 x 60 cm

Shopping Mall Limbecker Platz, Essen, Germany
Valley, earth-brown, slate, sand-beige, 60 x 60 cm

The formula



One unique feature of Drytile is its specially-developed cork layer based on polyolefins. Free of PVC, chlorine and plasticizers, and even suitable for contact with food, it is generated thermally from a cork granulate under constant pressure and applied permanently to the back of the tile in a special process. This ensures that the tile is firmly suctioned to the floor. No mortar bed, no adhesive. We refer to this system as dry tiling.

The principle is ingeniously simple: the tile's inherent weight presses the cork layer onto the substrate where it adheres, vacuum-like, and guarantees that everything stays firmly in place. Enhanced by decoupling in the case of floating installation, cork also ensures improved impact sound insulation.

It goes without saying that the system from Drytile also offers all of the advantages of ceramic tiles when compared to other floorings such as laminate or vinyl: they are absolutely light-fast, UV-resistant and odour-neutral; heavy furniture does not leave any pressure marks; they are non-flammable as well as being impervious to heat.

These features make Drytile an ideal system for shop fitting, car showrooms, offices, hotels, museums, commercial buildings, schools and restaurants.

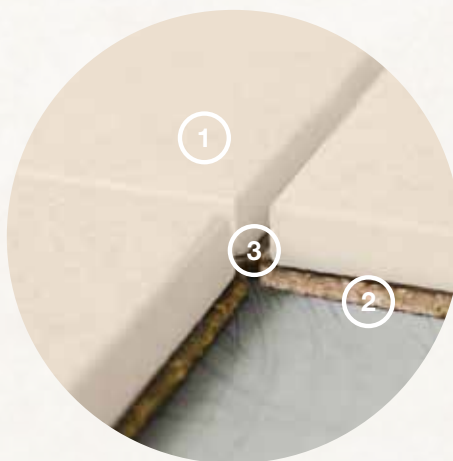
Drytile consulting and installation are provided exclusively by certified partners. Enabling us to guarantee the quality of installation and system function.



Cork granulate



**Green
Product Award**
Winner 2020



1. Ceramic tile with corresponding technical characteristics
2. Cork layer on back durably applied by a special technique
3. System joint automatically formed by the projection on all sides

System description:





Emil Frey City Store / Zürich, Switzerland / Valley, sand-beige, 60 x 60 cm



So many advantages ...

For building owners

+ Significantly shorter installation periods

Drytile is laid in record time compared to traditional tiling.

+ Entirely reversible at no great effort

If you wish to keep abreast of the latest trends in interior design or areas are subject to a change of use, you can swiftly and easily remove the tiles entirely reversibly and without any dust.

+ Easy repair of damaged tiles

Damaged tiles can be replaced within minutes. Joints are easily cut open, no drying times for tile adhesive – simply insert the new tile and regrout.

For craftsmen

+ Practically dust-free installation

Noise, dust and stress are irritating factors. The system floors from Drytile do not require any adhesive and installation is fast and smooth.

+ Minimising warranty claims

Constructive decoupling means that complaints based on underground movements are practically eliminated.

+ Tapping new areas of business

Drytile makes tiles fit for new areas of application and offers trade and craftsmen new impulses. Whether supermarkets, hotels or showrooms: Drytile offers flexibility and speed – and all of the advantages of a robust tile surface. Make the most of these opportunities: become a Drytile partner!

For architects

+ Parallel planning of tasks

The system floors from Drytile can be walked on immediately, enabling the continuation of other tasks, such as electrical installation, painting or drywall work, practically without interruption.

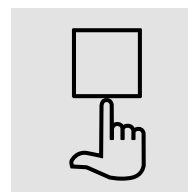
+ Easy planning

The only requirement for Drytile is a level substrate. The DIN 18202 "Tolerances in building construction" standard applies as the basis for dimensioning. "Visible" planning, and not according to rigidly specified separating joints and minimum clearances.

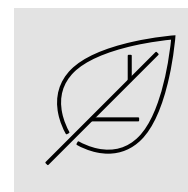
+ Innovative installation

Efficient, fast and easily laid: the combination of FLOOR and more® from Lindner Group and the Drytile system unites the advantages of a hollow floor system and uncomplicated installation of a high-quality ceramic floor covering.

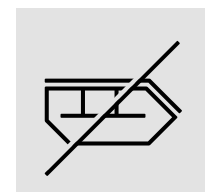
Drytile tile in combination with FLOOR and more® hollow floor system from Lindner



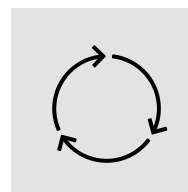
Easy installation



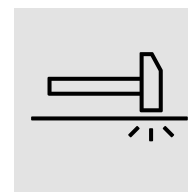
Emission-free



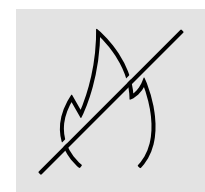
Incurs little waste



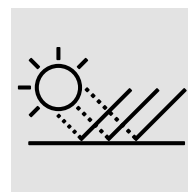
Recyclable



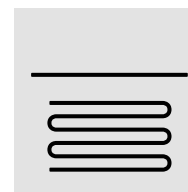
Impact-proof



Low-flammable



Color-fast



Suitable for underfloor heating



Tested product



It's all about stories, Limbecker Platz, Essen, Germany
Valley, earth-brown, slate, sand-beige, 60 x 60 cm

Installation: fast, faster, finished.

Check for planarity

The only prerequisite for laying system floors from Drytile is a sufficiently smooth subsurface exceeding the surface evenness tolerances according to DIN 18202. An inside micrometre of 2 mm on a length of 2 m must be maintained. Prior to installation, the subsurface must be examined for evenness and surface quality using the appropriate measuring instruments. The dimensional accuracy and evenness of the laying surface must comply with that of the finished covered area. This can be achieved by means of full-surface levelling.

Specify joint grid

The system floors from Drytile can be installed in any standard joint grid. The slim and precise system joint is automatically achieved by laying the cork edges tightly against each other.

Grout tiles

Drytile tiles are grouted using special dispersion joint mortar immediately after installation, if possible, whereby the enclosed manufacturer's installation instructions concerning the mixing ratio with water must be observed.

The surface can be walked on after 12 hours and displays full load-bearing capacity after 24 hours.

Technical data and approvals

- Own Ü-marking
- Building inspection approval: DIBt approval number Z-156.610-1696
- Emission-tested construction product in accordance with DIBt principles
- Fire performance: flame-retardant class Bfl-s1 as per DIN EN 13501-1 on solid mineral substrates (gross density $\geq 1350 \text{ kg/m}^3$) and on substrates made of wood and wood materials (thickness $\geq 10 \text{ mm}$, gross density $\geq 475 \text{ kg/m}^3$)
- Acoustic and constructive decoupling from the subsurface (up to 10 db* impact sound reduction value as per ITA Wiesbaden test)
- Disposal (tile incl. cork layer and system joint mass) as per waste code 170904 (DK1 landfill)

*Test value acc. to DIN EN ISO 10140. The impact sound reduction actually achieved should be established by trial laying and measurement on site.



- 1 Examine planarity using the appropriate measuring instruments.



- 2 Rework the floor if necessary in order to ensure the requirements on evenness.



- 3 Specify the joint grid and lay the cork edges tightly against each other.



- 4 Grout the tiles using special system grout mortar. Ensure the correct mixing ratio of grout mortar and water as per manufacturer's instructions.



- 5 Drytile tiles can be easily replaced at any time. Simply cut open the joint, remove the tile with a suction lifter and insert the new tile.



Installation guideline:



Innovative surface finishes



Changemaker-Shop, Zürich, Switzerland / Valley, sand-beige, 60 x 60 cm

HYTECT – THE HYGIENE TILE

Hytect tiles can make a significant contribution to a healthy room climate. After all, this innovative technology reduces bacteria, mould and germs, breaks down pollutants in the air, and ensures that dirt can be easily removed. Hytect acts like a natural catalyst whose effects are triggered simply by light – and permanently. After all, Hytect is inseparably and durably baked into the tile. For sustainably good quality of air.

How the Hytect technology works

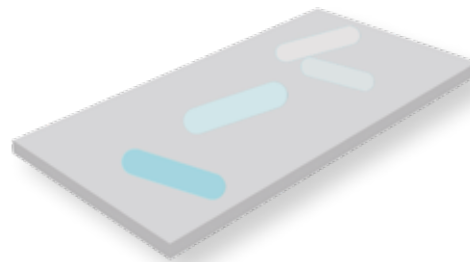
Titanium dioxide (TiO₂) is fired insolubly and permanently into the ceramic surface at high temperatures. As a permanent catalyst, it facilitates a life-long reaction between light (photocatalysis), oxygen and humidity. This gives rise to activated oxygen and a hydrophilic, water-friendly ceramic surface. The activated oxygen undertakes three decisive functions:

- Hytect slows the growth of mould, bacteria and other microorganisms
- Hytect facilitates cleaning of the surface finish
- Hytect helps to break down indoor air pollutants such as formaldehyde and odours



Easy to clean

Thanks to the Hytect surface, dirt is simply rinsed off. This reduces the effort involved in cleaning and the use of cleaning agents. Making it possible to concentrate on the good things in life while protecting the environment at the same time.



Antibacterial effect

When Hytect interacts with light, oxygen is activated which breaks down microorganisms such as bacteria, mould and germs. For a good feeling of having a home which protects us from germs

Floors offering the special Hytect coating bear the corresponding logo in the product section.



Improved room climate

Hytect triggers an air-purification process which neutralises both unpleasant odours and pollutants such as nitrogen oxides. Enabling every member of the family and guest to your home to breathe easily.

To the Hytect film:



More information:
www.hyTECT.com

Renowned test institutes confirm the effects of Hytect.

PROTECTA-UPGRADED TILES

Unglazed vitrified tiles are hard-wearing and resistant by nature. Thanks to the Protecta surface upgrading, stain and dirt resistance could be improved considerably: during the firing process, the coating applied in-plant is ceramically bonded to the biscuit and closes the existing “micropores” quite natural for unglazed ceramics. In this way, the penetration of substances forming stains is prevented. Thus, an impregnation is no longer required and may possibly even have a negative effect in the case of slip-resistant tiles with Protecta surface upgrading, as the impregnating agent cannot penetrate the tile, but remains on the surface as a lubricating film.





Vinzenz Murr, Regensburg, Germany / Soul, anthracite, 60 x 60 cm



Product Overview

DRY LILE



Area Pro, sand, 30 x 60 cm

AREA PRO



anthracite



basalt



pebble



stone



sand-white



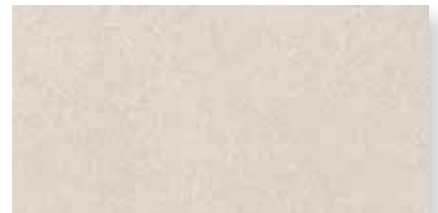
sand-grey



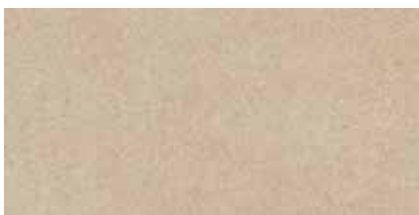
sand



nutmeg



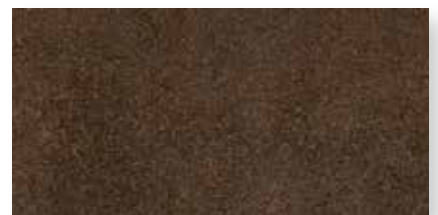
platinum



sand-beige



brick



clay

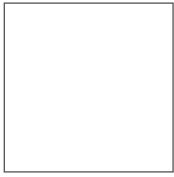


| | | | | |
|-------------------------|------------------|------------------|------------------|-------------------|
| Nom. dim. - cm | 30 x 60 | 60 x 60 | 60 x 90 | 60 x 120 |
| Work size - mm | 297 x 597 x 12.5 | 597 x 597 x 12.5 | 597 x 897 x 12.5 | 597 x 1197 x 12.5 |
| Slip resistance | R10 | R10 | R10 | R10 |
| m ² / Pieces | 5.556 | 2.778 | 1.851 | 1.388 |
| Pallet / Pieces | 200 | 100 | 60 | 50 |
| Pallet - m ² | 35.997 | 35.997 | 32.415 | 36.023 |
| Pallet - kg | 886.400 | 906.000 | 802.800 | 907.950 |

| | | | | | |
|---|------------|------------------|-------------------|------------------|------------------|
|  | anthracite | 430340HDT | 430380HDT* | 430576HDT | 430398HDT |
|  | basalt | 430341HDT | 430381HDT* | 430577HDT | 430399HDT |
|  | pebble | 430342HDT | 430382HDT* | 430578HDT | 430400HDT |
|  | stone | 430343HDT | 430383HDT | 430579HDT | 430401HDT |
|  | sand-white | 430344HDT | 430384HDT | 430580HDT | 430402HDT |
|  | sand-grey | 430345HDT | 430385HDT* | 430581HDT | 430403HDT |
|  | sand | 430346HDT | 430386HDT* | 430582HDT | 430404HDT |
|  | nutmeg | 430347HDT | 430387HDT | 430583HDT | 430405HDT |
|  | platinum | 430348HDT | 430388HDT | 430584HDT | 430406HDT |
|  | sand-beige | 430349HDT | 430389HDT* | 430585HDT | 430407HDT |
|  | brick | 430350HDT | 430390HDT | 430586HDT | 430408HDT |
|  | clay | 430351HDT | 430391HDT | 430587HDT | 430409HDT |

*also available as patio tiles

System floor with ceramic tiles, DIN EN 14411, group BI_a, unglazed (UGL) and group AI_b, unglazed (UGL) for floor coverings in indoor areas (porcelain stoneware tiles) / (porcelain stoneware slabs)



Skirting



| | | |
|-----------------|-----------------|-----------------|
| 90 x 90** | Nom. dim. - cm | 7 x 60 |
| 895 x 895 x 13 | Work size - mm | 70 x 597 x 10.5 |
| R10 | | |
| 1.234 | m / Pieces | 1.667 |
| 40 | Bundle / Pieces | 15 |
| 32.415 | Bundle - m | 8.998 |
| 845.720 | Bundle - kg | 14.250 |
| 430422DT | anthracite | 430528H |
| 430423DT | basalt | 430529H |
| 430424DT | pebble | 430530H |
| | stone | 430531H |
| | sand-white | 430532H |
| 430425DT | sand-grey | 430533H |
| 430426DT | sand | 430534H |
| | sand-grey | 430535H |
| | platinum | 430536H |
| 430427DT | sand-beige | 430537H |
| | brick | 430538H |
| | clay | 430539H |



Area Pro, basalt, 30 x 60 cm





Factory, lime, 60 x 60 cm

FACTORY



lime



bronze grey



aluminium



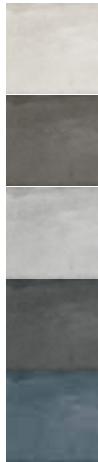
asphalt



blue steel



| | | | |
|-------------------------|----------------|----------------|-----------------|
| Nom. dim. - cm | 30 x 60 | 60 x 60* | 60 x 120 |
| Work size - mm | 297 x 597 x 11 | 597 x 597 x 11 | 597 x 1197 x 11 |
| Slip resistance | R10 | R10 | R10 |
| m ² / Pieces | 5.556 | 2.778 | 1.388 |
| Pallet / Pieces | 200 | 100 | 50 |
| Pallet - m ² | 35.997 | 35.997 | 36.023 |
| Pallet - kg | 767.000 | 783.700 | 811.700 |



| | | | |
|-------------|-----------|-----------|-----------|
| lime | 435906HDT | 435911HDT | 435916HDT |
| bronze grey | 435907HDT | 435912HDT | 435917HDT |
| aluminium | 435908HDT | 435913HDT | 435918HDT |
| asphalt | 435909HDT | 435914HDT | 435919HDT |
| blue steel | 435910HDT | 435915HDT | 435920HDT |

**Skirting**

| | |
|-----------------|--------------|
| Nom. dim. - cm | 7 x 60 |
| Work size - mm | 70 x 597 x 9 |
| m / Pieces | 1.667 |
| Bundle / Pieces | 15 |
| Bundle - m | 8.998 |
| Bundle - kg | 12.210 |

lime 435935H

bronze grey 435936H

aluminium 435937H

asphalt 435938H

blue steel 435939H

*also available as patio tiles

DRY LILE



Like, cement, 60 x 60 cm

LIKE



graphite



ash grey



cement




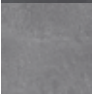
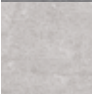

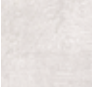
warm grey



off-white



| | | | |
|-------------------------|----------------|----------------|----------------|
| Nom. dim. - cm | 30 x 60 | 60 x 60* | 80 x 80 |
| Work size - mm | 297 x 596 x 11 | 596 x 596 x 11 | 795 x 795 x 11 |
| Slip resistance | R10 | R10 | R10 |
| m ² / Pieces | 5.556 | 2.778 | 1.563 |
| Pallet / Pieces | 200 | 100 | 50 |
| Pallet - m ² | 35.997 | 35.997 | 31.990 |
| Pallet - kg | 764.600 | 744.700 | 728.750 |

| | | | | |
|---|-----------|-----------------|-----------------|-----------------|
|  | graphite | 430645DT | 430650DT | 430655DT |
|  | ash grey | 430646DT | 430651DT | 430656DT |
|  | cement | 430647DT | 430652DT | 430657DT |
|  | warm grey | 430648DT | 430653DT | 430658DT |
|  | off-white | 430649DT | 430654DT | 430659DT |



Skirting



| | |
|-----------------|--------------|
| Nom. dim. - cm | 7 x 60 |
| Work size - mm | 70 x 596 x 9 |
| m / Pieces | 1.667 |
| Bundle / Pieces | 22 |
| Bundle - m | 13.197 |
| Bundle - kg | 17.908 |

| | |
|-----------|---------------|
| graphite | 430677 |
| ash grey | 430678 |
| cement | 430679 |
| warm grey | 430680 |
| off-white | 430681 |

*also available as patio tiles



Backfactory, Hannover, Germany / Nova, anthracite-multicolored, 60 x 60 cm

NOVA



cream-beige



mid-brown



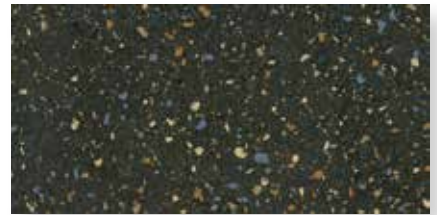
mid-grey



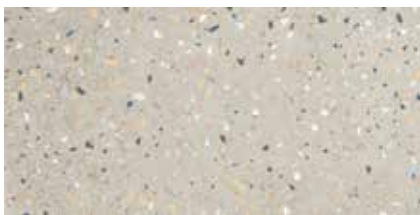
basalt



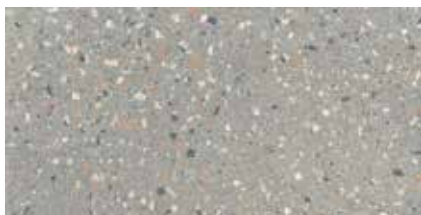
anthracite



anthracite-multicolored



cream-beige-multicolored



mid-grey-multicolored



| | | | |
|-------------------------|------------------|------------------|-------------------|
| Nom. dim. - cm | 30 x 60 | 60 x 60 | 60 x 120 |
| Work size - mm | 297 x 597 x 12.5 | 597 x 597 x 12.5 | 597 x 1197 x 12.5 |
| Slip resistance | R10 | R10 | R10 |
| m ² / Pieces | 5.556 | 2.778 | 1.388 |
| Pallet / Pieces | 200 | 100 | 50 |
| Pallet - m ² | 35.997 | 35.997 | 36.023 |
| Pallet - kg | 841.400 | 842.200 | 842.250 |

| | | | | |
|---|--------------------------|------------------|------------------|------------------|
|  | cream-beige | 431829HDT | 431840HDT | 431846HDT |
|  | mid-brown | 431830HDT | 431841HDT | 431847HDT |
|  | mid-grey | 431831HDT | 431842HDT | 431848HDT |
|  | basalt | 431832HDT | 431843HDT | 431849HDT |
|  | anthracite | 431833HDT | 431844HDT | 431850HDT |
|  | anthracite-multicolored | 431834HDT | 431845HDT | 431851HDT |
|  | cream-beige-multicolored | 431750HDT | 431752HDT | 431754HDT |
|  | mid-grey-multicolored | 431751HDT | 431753HDT | 431755HDT |

**Skirting**

| | | | |
|-----------------|-----------------|--------------------------|-----------------|
| Nom. dim. - cm | 7 x 60 | Nom. dim. - cm | 7 x 60 |
| Work size - mm | 70 x 597 x 10.5 | Work size - mm | 70 x 597 x 10.5 |
| m / Pieces | 1.667 | m / Pieces | 1.667 |
| Bundle / Pieces | 15 | Bundle / Pieces | 15 |
| Bundle - m | 8.998 | Bundle - m | 8,998 |
| Bundle - kg | 13.980 | Bundle - kg | 13.980 |
| cream-beige | 431864H | anthracite | 431868H |
| mid-brown | 431865H | anthracite-multicolored | 431869H |
| mid-grey | 431866H | cream-beige-multicolored | 431762H |
| basalt | 431867H | mid-grey-multicolored | 431763H |



Quarzit, sand-beige, 60 x 60 cm

QUARZIT



basalt-grey



quartz-grey



sand-beige



sepia-brown



white-grey



Skirting



| | | |
|-------------------------|----------------|----------------|
| Nom. dim. - cm | 30 x 60 | 60 x 60 |
| Work size - mm | 297 x 597 x 10 | 597 x 597 x 10 |
| Slip resistance | R10 | R10 |
| m ² / Pieces | 5.556 | 2.778 |
| Pallet / Pieces | 200 | 100 |
| Pallet - m ² | 35.997 | 35.997 |
| Pallet - kg | 677.200 | 698.400 |

| | |
|-------------------------|--------------|
| Nom. dim. - cm | 6 x 60 |
| Work size - mm | 60 x 597 x 8 |
| m ² / Pieces | 1.667 |
| Pallet / Pieces | 34 |
| Pallet - m ² | 20.396 |
| Pallet - kg | 22.440 |



| | | |
|-------------|----------------------|-----------------------|
| basalt-grey | 8450-B200HKDT | 8450-B600HKDT* |
| quartz-grey | 8451-B200HKDT | 8451-B600HKDT* |
| sand-beige | 8452-B200HKDT | 8452-B600HKDT* |
| sepia-brown | 8453-B200HKDT | 8453-B600HKDT |
| white-grey | 8454-B200HKDT | 8454-B600HKDT |

| | |
|-------------|--------------------|
| basalt-grey | 8450-B611HK |
| quartz-grey | 8451-B611HK |
| sand-beige | 8452-B611HK |
| sepia-brown | 8453-B611HK |
| white-grey | 8454-B611HK |



*also available as patio tiles



Solid Rock, natural grey, 30 x 60 cm

SOLID ROCK



silver



mud grey



natural grey



deep grey



dark green



| | | | |
|-------------------------|----------------|----------------|-----------------|
| Nom. dim. - cm | 30 x 60 | 60 x 60* | 60 x 120* |
| Work size - mm | 297 x 596 x 11 | 596 x 596 x 11 | 596 x 1194 x 11 |
| Slip resistance | R10 | R10 | R10 |
| m ² / Pieces | 5.556 | 2.778 | 1.388 |
| Pallet / Pieces | 200 | 100 | 50 |
| Pallet - m ² | 35.997 | 35.997 | 36.023 |
| Pallet - kg | 764.600 | 744.700 | 825.450 |



| | | | |
|--------|-----------------|-----------------|-----------------|
| silver | 430869DT | 430873DT | 430877DT |
|--------|-----------------|-----------------|-----------------|



| | | | |
|----------|-----------------|-----------------|-----------------|
| mud grey | 430870DT | 430874DT | 430878DT |
|----------|-----------------|-----------------|-----------------|



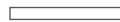
| | | | |
|--------------|-----------------|-----------------|-----------------|
| natural grey | 430871DT | 430875DT | 430879DT |
|--------------|-----------------|-----------------|-----------------|



| | | | |
|-----------|-----------------|-----------------|-----------------|
| deep grey | 430872DT | 430876DT | 430880DT |
|-----------|-----------------|-----------------|-----------------|



| | | | |
|------------|-----------------|-----------------|-----------------|
| dark green | 431024DT | 431025DT | 431026DT |
|------------|-----------------|-----------------|-----------------|

Skirting

| | |
|-----------------|--------------|
| Nom. dim. - cm | 7 x 60 |
| Work size - mm | 70 x 597 x 9 |
| m / Pieces | 1.667 |
| Bundle / Pieces | 22 |
| Bundle - m | 13.197 |
| Bundle - kg | 17.908 |

| | |
|--------|---------------|
| silver | 430889 |
|--------|---------------|

| | |
|----------|---------------|
| mud grey | 430890 |
|----------|---------------|

| | |
|--------------|---------------|
| natural grey | 430891 |
|--------------|---------------|

| | |
|-----------|---------------|
| deep grey | 430892 |
|-----------|---------------|

| | |
|------------|---------------|
| dark green | 431031 |
|------------|---------------|



*also available as patio tiles

Stories, sepia, 60 x 60 cm

STORIES



ivory



concrete



sepia



anthracite

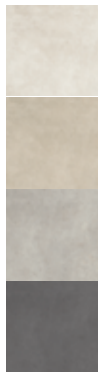


Skirting



| | | |
|-------------------------|----------------|----------------|
| Nom. dim. - cm | 30 x 60 | 60 x 60* |
| Work size - mm | 297 x 597 x 11 | 597 x 597 x 11 |
| Slip resistance | R10 | R10 |
| m ² / Pieces | 5.556 | 2.778 |
| Pallet / Pieces | 200 | 100 |
| Pallet - m ² | 35.997 | 35.997 |
| Pallet - kg | 767.000 | 783.700 |

| | |
|-----------------|--------------|
| Nom. dim. - cm | 7 x 60 |
| Work size - mm | 70 x 597 x 9 |
| m / Pieces | 1.667 |
| Bundle / Pieces | 15 |
| Bundle - m | 8.998 |
| Bundle - kg | 12.210 |



| | | |
|------------|------------------|------------------|
| ivory | 431630HDT | 431634HDT |
| sepia | 431631HDT | 431635HDT |
| concrete | 431632HDT | 431636HDT |
| anthracite | 431633HDT | 431637HDT |

| | |
|------------|----------------|
| ivory | 431642H |
| sepia | 431643H |
| concrete | 431644H |
| anthracite | 431645H |



R10



*also available as patio tiles

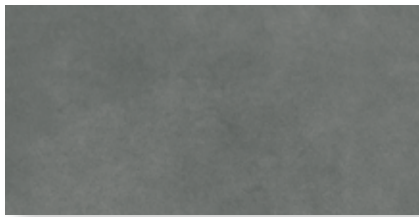


Strata, quarz, 60 x 60 cm

STRATA



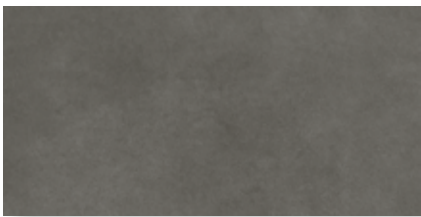
quartz



stone



lava



volcano



loam



clay



lime

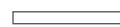


pumice



| | | | | |
|-------------------------|----------------|----------------|----------------|-----------------|
| Nom. dim. - cm | 30 x 60 | 60 x 60 | 60 x 90 | 60 x 120 |
| Work size - mm | 297 x 597 x 10 | 597 x 597 x 10 | 597 x 897 x 10 | 597 x 1197 x 10 |
| Slip resistance | R10 | R10 | R10 | R10 |
| m ² / Pieces | 5.556 | 2.778 | 1.852 | 1.389 |
| Pallet / Pieces | 200 | 100 | 60 | 50 |
| Pallet - m ² | 35.997 | 35.997 | 32.397 | 35.997 |
| Pallet - kg | 677.200 | 698.400 | 629.520 | 680.450 |

| | | | | | |
|--|---------|-----------|-----------|-----------|-----------|
| | quartz | 435428HDT | 435436HDT | 435444HDT | 435452HDT |
| | stone | 435429HDT | 435437HDT | 435445HDT | 435453HDT |
| | lava | 435430HDT | 435438HDT | 435446HDT | 435454HDT |
| | volcano | 435431HDT | 435439HDT | 435447HDT | 435455HDT |
| | loam | 435432HDT | 435440HDT | 435448HDT | 435456HDT |
| | clay | 435433HDT | 435441HDT | 435449HDT | 435457HDT |
| | lime | 435434HDT | 435442HDT | 435450HDT | 435458HDT |
| | pumice | 435435HDT | 435443HDT | 435451HDT | 435459HDT |

**Skirting**

| | |
|-----------------|--------------|
| Nom. dim. - cm | 7 x 60 |
| Work size - mm | 70 x 597 x 8 |
| m / Pieces | 1.667 |
| Bundle / Pieces | 15 |
| Bundle - m | 8.998 |
| Bundle - kg | 10.965 |

| | |
|-----------------|--------------|
| Nom. dim. - cm | 7 x 60 |
| Work size - mm | 70 x 597 x 8 |
| m / Pieces | 1.667 |
| Bundle / Pieces | 15 |
| Bundle - m | 8.998 |
| Bundle - kg | 10.965 |

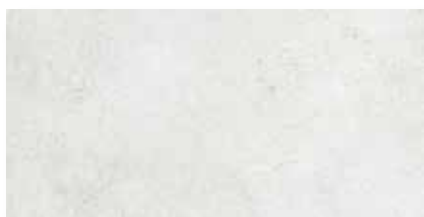
| | |
|---------|---------|
| quartz | 435492H |
| stone | 435493H |
| lava | 435494H |
| volcano | 435495H |

| | |
|--------|---------|
| loam | 435496H |
| clay | 435497H |
| lime | 435498H |
| pumice | 435499H |



Trio, mud grey 60 x 60 cm

TRIO



ivory white



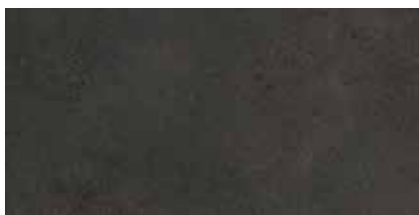
cement grey



iron grey




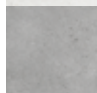

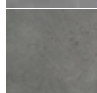
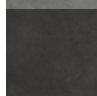
mud grey



slate black



| | | | |
|-------------------------|----------------|----------------|-----------------|
| Nom. dim. - cm | 30 x 60 | 60 x 60* | 60 x 120 |
| Work size - mm | 297 x 597 x 11 | 597 x 597 x 11 | 597 x 1197 x 11 |
| Slip resistance | R10 | R10 | R10 |
| m ² / Pieces | 5.556 | 2.778 | 1.388 |
| Pallet / Pieces | 200 | 100 | 50 |
| Pallet - m ² | 35.997 | 35.997 | 36.023 |
| Pallet - kg | 767.000 | 744.700 | 811.700 |

| | | | | |
|---|-------------|------------------|------------------|-------------------|
|  | ivory white | 431652HDT | 431657HDT | 431665HDT |
|  | cement grey | 431653HDT | 431658HDT | 431666HDT* |
|  | iron grey | 431654HDT | 431659HDT | 431667HDT |
|  | mud grey | 431655HDT | 431660HDT | 431668HDT |
|  | slate black | 431656HDT | 431661HDT | 431669HDT* |

Skirting

| | |
|-----------------|--------------|
| Nom. dim. - cm | 7 x 60 |
| Work size - mm | 70 x 597 x 9 |
| m / Pieces | 1.667 |
| Bundle / Pieces | 15 |
| Bundle - m | 8.998 |
| Bundle - kg | 12.210 |

ivory white **431687H**cement grey **431688H**iron grey **431689H**mud grey **431690H**slate black **431691H**

R10



*also available as patio tiles



It's all about stories / Limbecker Platz, Essen, Germany / Valley, earth-brown, slate, sand-beige, 60 x 60 cm

VALLEY



slate



pebble-grey



earth-brown



sand-beige



| | | | |
|-------------------------|----------------|----------------|-------------------|
| Nom. dim. - cm | 30 x 60 | 60 x 60* | 60 x 120 |
| Work size - mm | 297 x 596 x 12 | 596 x 596 x 12 | 596 x 1195 x 12.5 |
| Slip resistance | R10 | R10 | R10 |
| m ² / Pieces | 5.556 | 2.778 | 1.388 |
| Pallet / Pieces | 200 | 100 | 50 |
| Pallet - m ² | 35.997 | 35.997 | 36.023 |
| Pallet - kg | 870.400 | 870.400 | 885.400 |

| | | | | |
|--|-------------|-----------------|-----------------|-----------------|
|  | slate | 052016DT | 052020DT | 052024DT |
|  | pebble-grey | 052017DT | 052021DT | 052025DT |
|  | earth-brown | 052018DT | 052022DT | 052026DT |
|  | sand-beige | 052019DT | 052023DT | 052027DT |

**Skirting**

| | |
|-----------------|---------------|
| Nom. dim. - cm | 7 x 60 |
| Work size - mm | 70 x 596 x 10 |
| m / Pieces | 1.667 |
| Bundle / Pieces | 22 |
| Bundle - m | 13.197 |
| Bundle - kg | 20.460 |

| | |
|-------------|---------------|
| slate | 052072 |
| pebble-grey | 052073 |
| earth-brown | 052074 |
| sand-beige | 052075 |

*also available as patio tiles



Walden, smokey brown, 20 x 120 cm

WALDEN



sunny white



relax beige



classic oak



brown cherry



smokey brown



Skirting



| | |
|-------------------------|-----------------|
| Nom. dim. - cm | 20 x 120 |
| Work size - mm | 197 x 1195 x 11 |
| Slip resistance | R10 |
| m ² / Pieces | 4.166 |
| Pallet / Pieces | 150 |
| Pallet - m ² | 35.997 |
| Pallet - kg | 756.600 |

| | |
|-----------------|--------------|
| Nom. dim. - cm | 6 x 60 |
| Work size - mm | 60 x 596 x 9 |
| m / Pieces | 1.667 |
| Bundle / Pieces | 27 |
| Bundle - m | 16.196 |
| Bundle - kg | 20.034 |



| | |
|--------------|-----------------|
| sunny white | 430685DT |
| relax beige | 430686DT |
| classic oak | 430687DT |
| brown cherry | 430688DT |
| smokey brown | 430689DT |

| | |
|--------------|---------------|
| sunny white | 430690 |
| relax beige | 430691 |
| classic oak | 430692 |
| brown cherry | 430693 |
| smokey brown | 430694 |



R10



protected

JOINT COLORS

System tile; cement-based joint sealer in accordance with DIN EN 13888:2009; with less water absorption and high abrasion resistance; application exclusively in indoor areas; not approved for wet areas.

System joint

| | Bundle - kg | 5 kg bucket | 25 kg packs |
|---|-------------|-------------------|-------------------|
|  | grey | F-10805-70 | F-10825-70 |
|  | anthracite | F-10806-70 | F-10826-70 |



grey



anthracite

Packing unit

5 kg per bucket as standard for each color; 25 kg per sack also available on request or for larger quantity requirements.



Consumption

| Format | Consumption | 5 kg sufficient for approx. |
|----------------------------------|------------------------------|---|
| 30 x 60 x 1.00/1.10/1.20/1.25 cm | approx. 280 g/m ² | 23 m ² / 20 m ² / 18 m ² / 17 m ² |
| 60 x 60 x 1.00/1.10/1.20/1.25 cm | approx. 190 g/m ² | 35 m ² / 31 m ² / 27 m ² / 26 m ² |
| 80 x 80 x 1.10 | approx. 140 g/m ² | 41 m ² |
| 60 x 90 x 1.25 cm | approx. 160 g/m ² | 31 m ² |
| 90 x 90 x 1.30 cm | approx. 120 g/m ² | 38 m ² |
| 20 x 120 x 1.10 cm | approx. 330 g/m ² | 17 m ² |
| 60 x 120 x 1.10/1.25 cm | approx. 140 g/m ² | 41 m ² / 35 m ² |

Installation guideline:



Open sacks must be used up in full; no subsequent processing.



Car dealership Müllejans, Nideggen, Germany / Emotion, coffee-brown, 60 x 60 cm

AGROB BUCHTAL GmbH

Buchtal 1, 92521 Schwarzenfeld, Germany
Telephone: +49 (0) 9435 391-0
Fax: +49 (0) 9435 391-3452
E-mail: info@agrob-buchtal.de

www.agrob-buchtal.de

Drytile North America

400 East Pine Street Suite 210, Seattle, WA 98122, USA
Phone: +1 (0) 833 379 8453
E-mail: info@drytilenorthamerica.com

www.drytile-ceramics.de/en

www.assenmacher.net

07/2024



The publisher does not accept any liability for printing errors. Color deviations from original products may arise for technical printing reasons.

A member company of



In cooperation with

